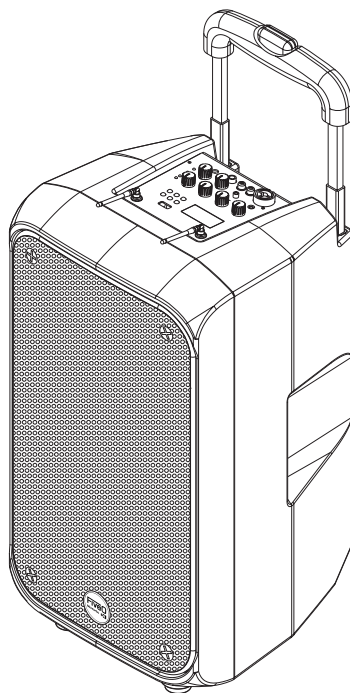


VIRGO 100

FiveO
Montarbo 

VIRGO 100

PORTABLE COMBO SYSTEM



EN OWNER'S MANUAL

Important Safety Instructions



TO REDUCE THE RISK OF ELECTRIC SHOCK PLEASE DO NOT REMOVE THE COVER OR THE BACK PANEL OF THIS EQUIPMENT. THERE ARE NO PARTS NEEDED BY USER INSIDE THE EQUIPMENT. FOR SERVICE, PLEASE CONTACT QUALIFIED SERVICE CENTERS.



This symbol, wherever used, alerts you to the presence of un-insulated and dangerous voltages in the product enclosure. These are voltages that may be sufficient to constitute the risk of electric shock or death.



This symbol, wherever used, alerts you to important operating and maintenance instructions. Please read.



Protective Ground Terminal



AC mains (Alternating Current)




Hazardous Live Terminal

ON: Denotes the product is turned on.

OFF: Denotes the product is turned off.

CAUTION

Describes precautions that should be observed to prevent damage to the product.

1. Read this Manual carefully before operation.
2. Keep this Manual in a safe place.
3. Be aware of all warning reported with this symbol. 
4. Keep this Equipment away from water and moisture.
5. Clean it only with dry cloth. Do not use solvent or other chemicals.
6. Do not damp or cover any cooling opening. Install the equipment only in accordance with the Manufacturer's instructions.
7. Power Cords are designed for your safety. Do not remove Ground connections! If the plug does not fit your AC outlet, seek advice from a qualified electrician. Protect the power cord and plug from any physical stress to avoid risk of electric shock. Do not place heavy objects on the power. This could cause electric shock or fire.
8. Unplug this equipment when unused for long periods of time or during a storm.
9. Refer all service to qualified service personnel only. Do not perform any servicing other than those instructions contained within the User's Manual.
10. To prevent fire and damage to the product, use only the recommended fuse type as indicated in this manual. Do not short-circuit the fuse holder.

WARNING

To reduce the risk of electric shock and fire, do not expose this equipment to moisture or rain.



Dispose of this product should not be placed in municipal waste and should be separate collection.

Before replacing the fuse, make sure that the product is OFF and disconnected from the AC outlet.

11. Move this Equipment only with a cart, stand, tripod, or bracket, specified by the manufacturer, or sold with the Equipment. When a cart is used, use caution when moving the cart/equipment combination to avoid possible injury from tip-over.



12. Permanent hearing loss may be caused by exposure to extremely high noise levels. The US. Government's Occupational Safety and Health Administration (OSHA) has specified the permissible exposure to noise level. These are shown in the following chart:

Hours x day	SPL	Example
8	90	Small gig
6	92	Train
4	95	Subway train
3	97	High level desktop monitors
2	100	Classic music concert
1.5	102	
1	105	
0.5	110	
0.25 or less	115	Rock Concert

According to OSHA, an exposure to high SPL in excess of these limits may result in the loss of heat. To avoid the potential damage of heat, it is recommended that Personnel exposed to equipment capable of generating high SPL use hearing protection while such equipment is under operation.

The apparatus shall be connected to a mains socket outlet with a protective earthing connection.

The mains plug or an appliance coupler is used as the disconnect device, the disconnect device shall remain readily operable.



CAUTION: To reduce the risk of electric shock, do not connect the loudspeaker to a power outlet while the grille is removed.

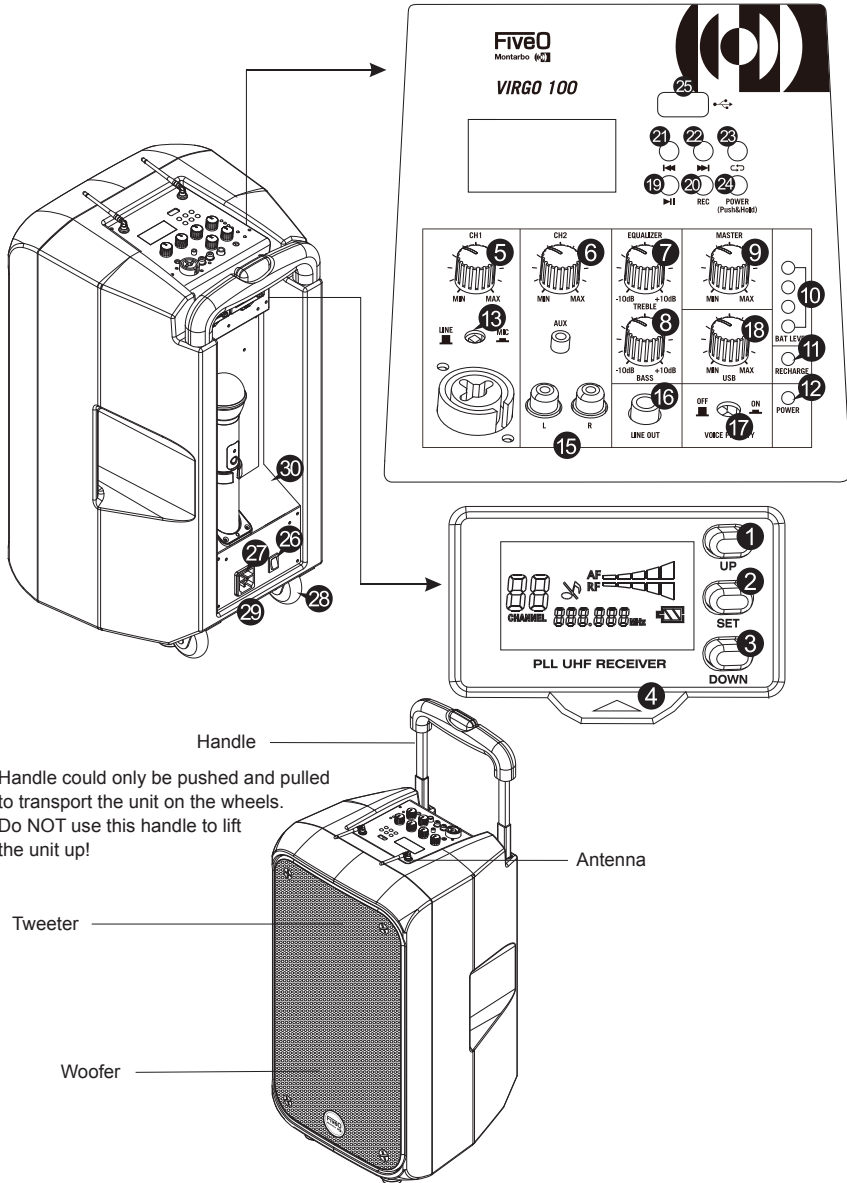
Table of Contents

1. FEATURES	4
2. DESCRIPTION OF VARIOUS PARTS	5
3. RECEIVER DISPLAY	8
4. METAL HAND MIC	9
5. BELTPACK MIC	10
6. TECHNICAL SPECIFICATION	14
7. CONNECTION DIAGRAM	15
8. BLOCK DIAGRAM	16
9. ACCESSORIES	17
10. CAUTION	17

FEATURES

- User- friendly operation.
- It is equipped with professional wireless receiving module with quartz locked, output volume control when the wireless module works, MP3 player and AUX output can be muted.
- Built-in one microphone input and one AUX input with individual volume controls.
- Built-in one AUX input and one line output.
- Built-in two tone (treble, bass) and master volume controls.
- Digital MP3 player with clear sound, easy operation.
- Class D power amplifier and professional two way crossover.
- Professional mounting hole for heightening this unit to meet the requirements.
- Wheel and handle for easy carriage.
- Two power supplies: AC 115-120V/220-240V, DC22.2V (LITHIUM BATTERY)
- When AC works, Power LED lights up; when battery works, Power LED and battery level LED light up.
- When AC inputs, the battery will charge automatically, and Recharge indicator will light red. After full recharged, the indicator will light green.

DESCRIPTION OF VARIOUS PARTS



DESCRIPTION OF VARIOUS PARTS

① UP

- Short press: Select the "UP" frequency.
- Long Press and hold the button for 3 seconds up, enter into IR pairing mode, simultaneously the CH code will flash, then release the button and paired with MIC IR.
- Press and hold the "UP" button 6 seconds or more, the frequency/CH will be progressively increased. Then it enter IR pairing mode and simultaneously CH code will start to flash after the button is released.

② SET

- Short press for one time: Enter the volume controlling mode and the volume can be adjusted by "UP" and "DOWN".
- Short press for two times: Enter SQUELCH controlling mode, SQUELCH can be adjusted by "UP" and "DOWN".

③ DOWN

- Short press: Select the "DOWN" frequency.
- Press and hold the "Down" button for 3 seconds, enter swept mode and begin to sweep the whole frequency rapidly, releasing the button, the system will select the cleanest channels from these frequencies swept automatically. Then enter into IR pairing mode and CH code start to flash. At this time it will pair with MIC IR.

④ Button for popping out the module

⑤ CH1 Volume Control

This knob is used to control the CH1 level.

⑥ CH2 Volume Control

This knob is used to control the CH2 level.

⑦ TREBLE CONTROL

This knob is used to control the treble level with range going from +10dB--10dB.

⑧ BASS CONTROL

This knob is used to control the bass level with range going from +10dB--10dB.

⑨ Master Volume control

This knob is used to control the Master level.

⑩ Battery level LED

Battery level indicator

⑪ Recharge Indicator LED

Charge indicator: lights red when charging and lights green after fully charged.

⑫ Power LED

The Power LED lights up when the amplifier is powered ON.

⑬ CH1 LINE and MIC Switch

MIC inputs when pressing MIC Switch, line inputs when the MIC Switch is popped out.

⑭ LINE1 or MIC1 Input

They are used for both balanced and unbalanced inputs.

DESCRIPTION OF VARIOUS PARTS

15 CH2 AUX Input

It is used for AUX input.

16 LINE OUT

It is connected to recorder or mixer.

17 Voice priority

When this button is engaged, CH1, RF1&RF2 will have priority over AUX and MP3
AUX and MP3 will be muted.

18 USB Volume control

This knob is used to control the USB player volume.

19 Play / Pause

20 Record

Press this button once and you are ready to record. Press the button again to start record. To stop press the POWER button.

21 Previous song

Play the previous song.

22 Next song

Play the next song.

23 Repeat

Select between different repeat modes (repeat all, repeat one song, shuffle and normal playback.)

24 POWER (ON/OFF)

Press and hold this button for switch ON or OFF VIRGO 100.

25 USB PORT

For connecting with USB memory.

26 POWER SWITCH

If the switch is set to the position "ON", both AC and DC supply is connected, AC supply has priority over DC supply. When there is no AC voltage input, it will automatically switch to DC supply and the unit keeps working during AC/DC is switching. If the switch is set to the position "OFF", the whole unit doesn't work.

27 AC INPUT

115-120V 50-60Hz, 220-240V 50-60Hz. Please check the voltage available in your country and how the voltage for unit is configured before attempting to connect your unit to the main AC.

28 Wheel

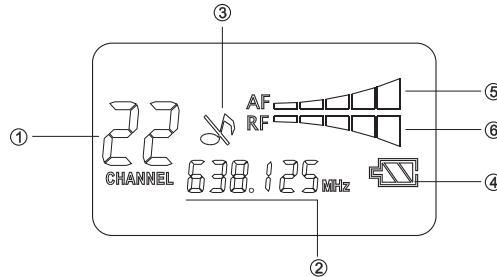
29 Rubber Feet

30 Charging indicator LED

Lights red when charging and lights green when the battery is fully charged.

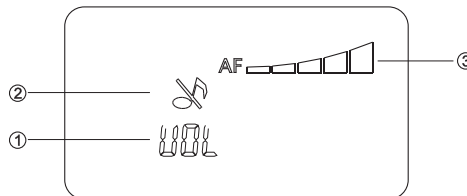
RECEIVER DISPLAY

- Standby Mode display



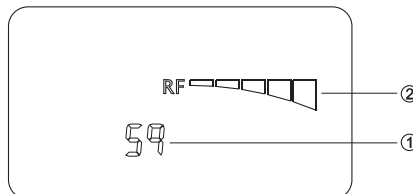
- ① Frequency Channel
- ② Current Frequency
- ③ Mic Mute indicator
- ④ Battery charge level
- ⑤ AF power indicator
- ⑥ RF power indicator

- Volume control display

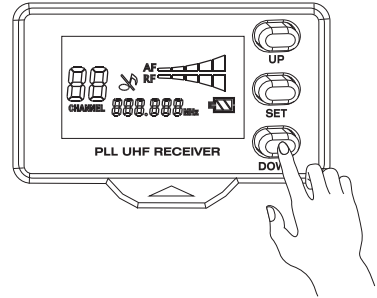


- ① Volume control
- ② Mute or unmute
- ③ AF level indicator

- SQUELCH control display



- ① SQUELCH control
- ② SQUELCH indicator



METAL HAND MIC

① Status indicator

This LED displays the operation mode:

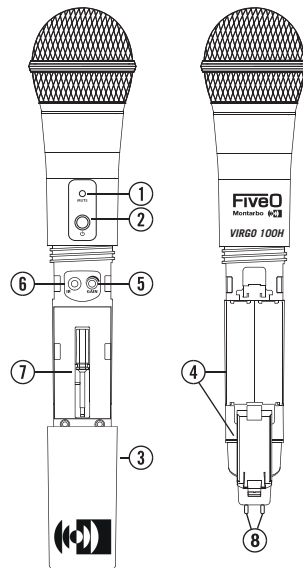
GREEN	Normal Operation
RED	Mute
Flashing RED	Low Power

② Power/Mute Switch

Press and hold to turn the unit on or off. Press and release to mute or unmute the transmitter.

③ Battery Cover

Unscrew the battery cover and slide down to open the MIC battery compartment.



METAL HAND MIC

④ **Battery Holder**

Open the battery holder by pressing the tab and lifting the cover, and insert two standard AA (LR6) batteries here, being sure to observe the correct polarity. **WARNING:** Do not insert the batteries backwards; doing so can cause severe damage to the MIC and will void your warranty.

⑤ **Input GAIN Control**

This control adjusts the transmitter input sensitivity. For optimal performance, you can use the included screwdriver to set the input GAIN control.

⑥ **IR Lens**

This window is used to capture the infrared signal sent from the receiver to the transmitter during the IR UP/DOWN operation. The battery cover must be open and the IR Lens facing towards the receiver to load the selected channel.

⑦ **Plastic Screwdriver**

Designed for adjusting the MIC input GAIN (See #5 Input GAIN Control HH).

⑧ **Charging indicator LED**

Lights red when charging and lights green after fully charged.

BELTPACK MIC

① **Antenna**

This permanently attached transmitter antenna should be fully extended during normal operation.

② **Status Indicator**

This LED displays the operation mode:

GREEN	Normal Operation
RED	Mute
Flashing RED	Low Power

③ **Power/Mute Switch**

Press and hold to turn the unit on or off. Press and release to mute or unmute the transmitter.

BELTPACK MIC

④ MINI 4P CONNECTOR

- a). Pin 1, GND
- b). Pin 2, Phantom power supply for condenser microphone
- c). Pin 3, designed for guitar, bass and keyboards
- d). Pin 4, designed for dynamic or condenser microphone

⑤ IR Receiving Section

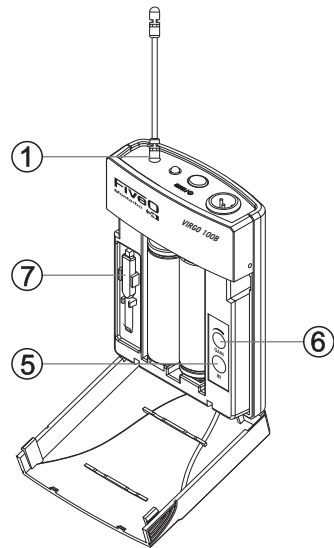
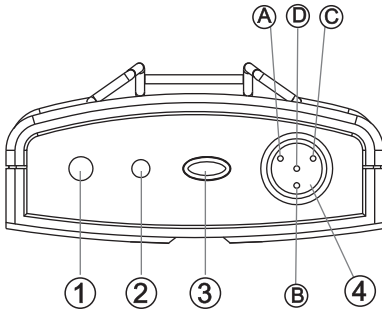
This window is used to capture the infrared signal sent from the receiver during the IR UP/DOWN to channelize the transmitter.

⑥ Input GAIN Control

This control adjusts the transmitter input sensitivity for microphone and instruments inputs.

⑦ Driver

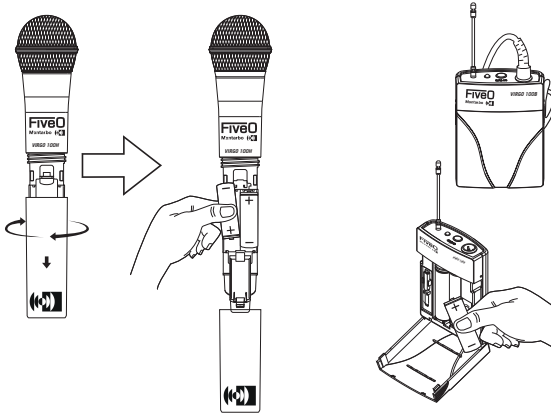
Designed for adjusting the MIC input GAIN.



BELTPACK MIC

With the transmitter powered off, install two fresh AA batteries into the MIC.
Leave the battery compartment open.

Turn on the transmitter by pressing and holding Power switch; the indicator LED will light green.



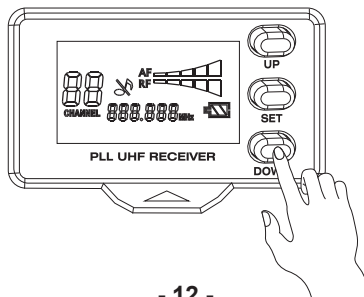
Press the UP/DOWN button on the front of the receiver to choose an available channel.
The channel number will increase by two digit, from 00-99. Once the last channel has been reached, the count will cycle back to 00.

Press and hold the UP button for 2 seconds to send the channel information to the transmitter via infrared transmission.

Press and hold DOWN button for 2 seconds and then start to scan full frequency and finally automatically choose clearest channel to send channel info to transmitter via infrared transmission.

Press and hold the UP button and the channel will be fast forward.

Press and hold the DOWN button and the channel will be fast backward.



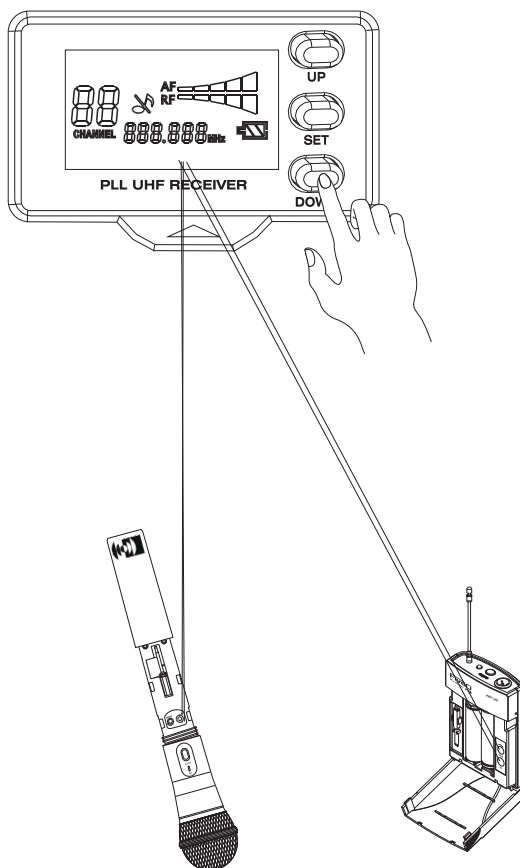
BELTPACK MIC

Place the transmitter about 15~30cm from the front of the receiver with the transmitter's IR window facing the display on the front panel of the receiver.

Press and hold the receiver UP/DOWN button to set the transmitter to the same channel as the receiver via infrared transmission.

When the transmission is complete, the receiver will receive RF signal and tone key from the transmitter.

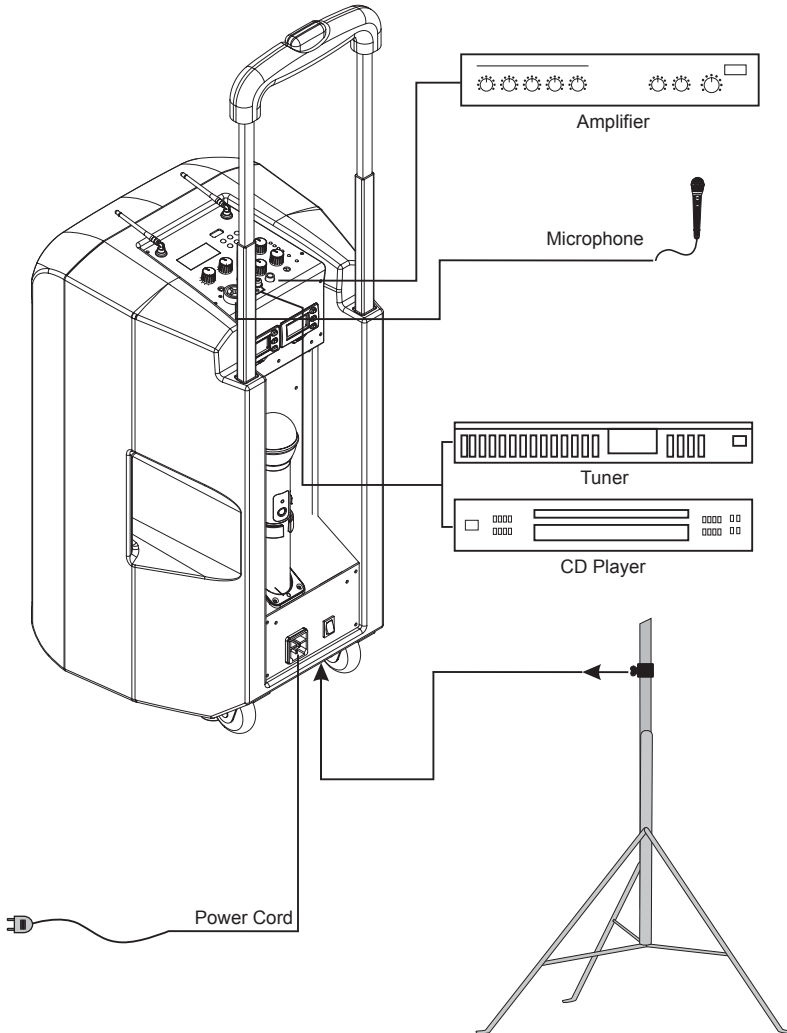
The RF indicator of the screen will light on the front panel of the receiver.



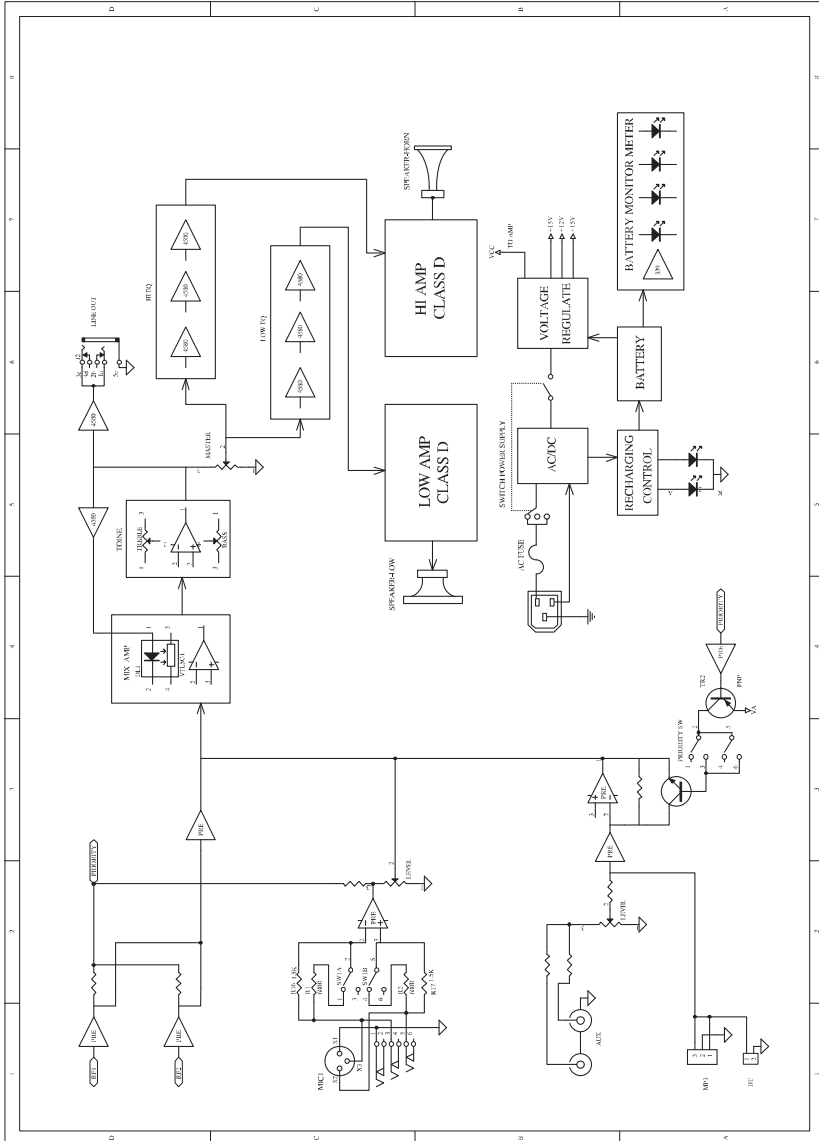
TECHNICAL SPECIFICATION

Power Supply	AC: 100V~120V / 220~240V / Battery: 25.9V(lithium battery)
System Type	2-Way Active Vented Speaker
Transducer Low	10" Woofer, 1.5" Voice coil
Transducer driver	1" Ferrite Driver, 1" Voice coil
Horn Coverage H°x V°	90°H x 45°V
Frequency Response (-6dB)	65Hz-20KHz
Crossover Frequency	5KHz
Max SPL	117dB Max
AMP Power Output	RMS: 200W(AC) (LF-Class D 135W&HF-Class D 65W)
Input sensitivity	CH1 MIC: -35dBu(±1dBu)
	CH1 LINE: -3dBu(±1dBu)
	CH1 AUX: -10dBu(±1dBu)
Equalizer Controls	BASS: ±10dB(at 100Hz)
	TREBLE: ±10dB(at 10K)
External Controls	Master Volume Control; MIC&LINE Switch; MIC1 - AUX each Volume Control: Voice Priority Switch; Power Indicators; Recharged Indicators; Battery Level Indicators;
Voice Priority	MIC 1 and Wireless
Battery charge time	Less than 4 hours
Battery operating time	More than 4 hours (Regular Play)
Wireless Frequency band	800MHZ
Built-in player	MP3
Enclosure Construction	Plastic cabinet, Trapezoidal, Metal grill, Rubber foot, handle
Mounting	36mm standard pole-mount
Dimensions(HxWxD)	568(H) x 300(W) x 300(D) mm
Net Weight	12.8kg
Volume	3.9CFT

CONNECTION DIAGRAM



Block Diagram



ACCESSORIES

Power Cord	x 1
Wireless Microphone	x 2
User Manual	x 1
Battery	x 1
Warranty Card	x 1

CAUTION

1. Do not use any volatile solvents such as toluene, Alcohol or gasoline for safety, keep product clean and free from dust.
2. Do not put this equipment in direct sunlight.
3. Do not expose this equipment to rain when used outdoor.
4. After using, press the power switch to turn off the power.
5. If the equipment is not used for a long time, please recharge the battery to at least 80% of its full level to lengthen the battery life.

EN *The information contained in this manual have been carefully drawn up and checked. However no responsibility will be assumed for any incorrectness. This manual cannot cover all the possible contingencies which may arise during the product installation and use. Should further information be desired, please contact us or our local distributor. Elettronica Montarbo srl can not be considered responsible for damages which may be caused to people and things when using this product. Specifications and features are subject to change without prior notice.*