



Typhoon

取扱説明書

P.2~

OWNER'S MANUAL

P.12~

〒154-0023
東京都世田谷区若林1-18-6
Web: www.vestax.jp E-Mail: cs@vestax.jp

Head Office
1-18-6 Wakabayashi, Setagaya-ku, Tokyo 154-0023 Japan
Web: <http://www.vestax.com/>

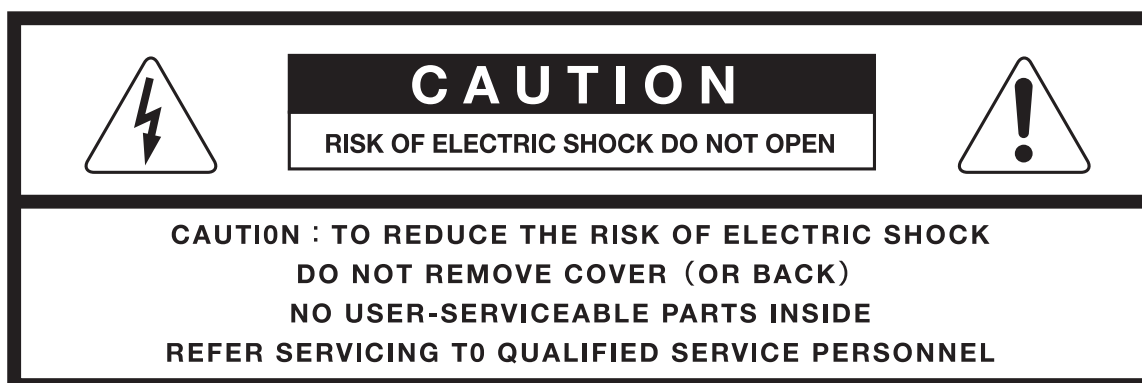
Vestax Global Support (US)
csg@vestax.jp

Vestax Europe Support (Europe)
cse@vestax.jp

TABLE OF CONTENTS

TABLE OF CONTENTS	12
SAFETY PRECAUTIONS	12
FEATURES	14
ACCESSORIES	14
MINIMUM SYSTEM REQUIREMENTS	14
SETUP	15
PART NAMES & FUNCTIONS	18
SETUP (Example)	20
SUPPORT	21
SPECIFICATIONS	21

SAFETY PRECAUTIONS



The lightning flash with arrowhead symbol, within an equilateral triangle, is intended to alert the user to the presence of uninsulated "dangerous voltage" within the product's enclosure that may be of sufficient magnitude to constitute a risk of electric shock to persons.



The exclamation point within an equilateral triangle is intended to alert the user to the presence of important operating and maintenance (servicing) instructions in the literature accompanying the appliance.

TO REDUCE THE RISK OF FIRE OR ELECTRIC SHOCK, DO NOT EXPOSE THIS APPLIANCE TO RAIN OR MOISTURE.

IMPORTANT SAFEGUARDS

READ BEFORE OPERATING EQUIPMENT

This product was designed and manufactured to meet strict quality and safety standards. There are, however, some installation and operation precautions which you should be particularly aware of.

1. Read instructions-All the safety and operating instructions should be read before the appliance is operated.
2. Retain instructions-The safety and operating instructions should be retained for future reference.
3. Heed Warnings-All warnings on the appliance and in the operating instructions should be adhered to.
4. Follow Instructions-All operating and use instructions should be followed.
5. Cleaning-Do not use liquid cleaners or aerosol cleaners. Use a damp cloth for cleaning.
6. Attachments-Do not use attachments not recommended by the product manufacturer as they may cause hazards.
7. Water and Moisture-Do not use this product near water-for example, near a bath tub, wash bowl, kitchen sink, or laundry tub, in a wet basement, or near a swimming pool, and the like.
8. Accessories-Do not place this product on an unstable cart, stand, tripod, or table. The product may fall, causing serious injury to a child or adult, and serious damage to the appliance. Use only with a cart, stand, tripod, bracket, or table recommended by the manufacturer, or sold with product. Any mounting of the appliance should follow the manufacturer's instructions, and should use a mounting accessory recommended by the manufacturer.
9. This product should never be placed near or over a radiator or heat register. This product should not be placed in a built-in installation such as a bookcase or rack unless proper ventilation is provided or the manufacturer's instructions have been adhered to.
10. Power sources-This product should be operated only from the type of power source indicated on the marking label. If you are not sure of the type of power supply to your home, consult your appliance dealer or local power company.
11. Lightning-For added protection of this product during a lightning storm, or when it is left unattended and unused for long periods of time, unplug it from the wall outlet. This will prevent damage to the product due to lightning and power-line surges.
12. Overloading-Do not overload wall outlets and extension cords as this can result in a risk of fire or electric shock.
13. Object and Liquid Entry-Never push objects of any kind into this product through openings as they may touch dangerous voltage points or short-out parts that could result in a fire or electric shock. Never spill liquid of any kind on the product.
14. Servicing-Do not attempt to service product yourself as opening or removing covers may expose you to dangerous voltage or other hazards. Refer all servicing to qualified personnel.

FEATURES

All you need to do is connect Typhoon to your computer with a USB cable, and you will have everything you need to DJ.

Play your favorite music, at your favorite places and whenever you like.

Don't think too much, just choose your favorite songs, adjust and control the music with your fingertips.

Feel the Music!

ACCESSORIES

- OWNER'S MANUAL
- USB CABLE
- CD-ROM(Virtual DJ LE)
- CD-ROM(driver)
- QUICK START GUIDE

MINIMUM SYSTEM REQUIREMENTS

Macintosh

OS: Mac OSX 10.4.11 or Higher

CPU: Intel Core DUO 1.66GHz or Higher

RAM: 1.0GB or higher

An Available USB Port

CD-ROM Drive

Windows

OS: Windows XP(SP2/32Bit) / Vista(SP1,32/64Bit) / Windows7(32/64Bit)

CPU: Intel Core DUO 1.4GHz(SSE1) or higher

RAM: 1.0GB or higher

An Available USB Port

CD-ROM Drive

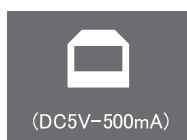
※ Support for Bundled software only.

※ Not support AMD CPU

SETUP

Windows

1. Connect Typhoon to your computers USB port with the included USB cable.



2. Switch the power select switch located on the rear panel to USB.



Driver Install

Typhoon requires an audio driver to be installed for operation.

- 1-1 Insert the included CD-ROM to your computer and double click on [ASIO4TYPHOONInstaller]

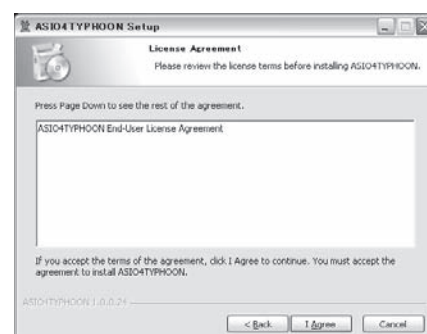


ASIO4TYPHOONInstaller -
v1.0.0.24

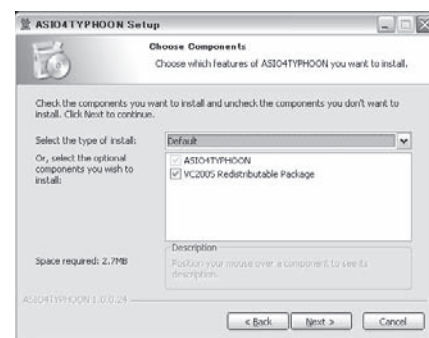
- 2-1 The installer will appear, click Next



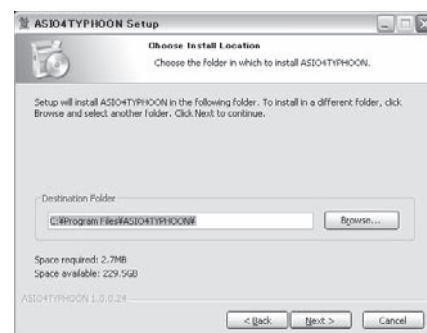
- 2-2 The license agreement will appear, click I Agree



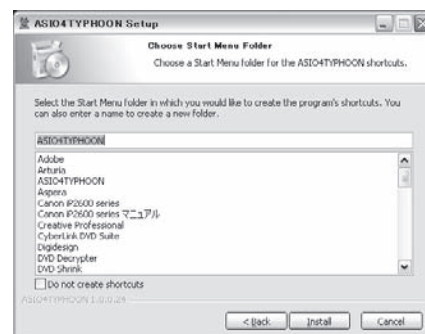
2-3 Drivers to be installed will appear, click Next



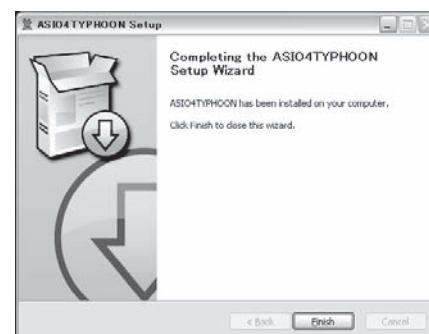
2-4 The installer will ask for a location for the driver to be saved, leave as it is unless it is necessary and click Next



2-5 The installer will ask if you wish to create a shortcut file on your desktop, select and click Install.



3-1 Click Finish

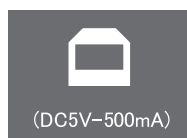


SET UP

Macintosh

Typhoon is a driver free controller. Simply connect Typhoon to your computer with a USB cable and you're all set.

1. Connect Typhoon to your computers USB port with a USB cable.

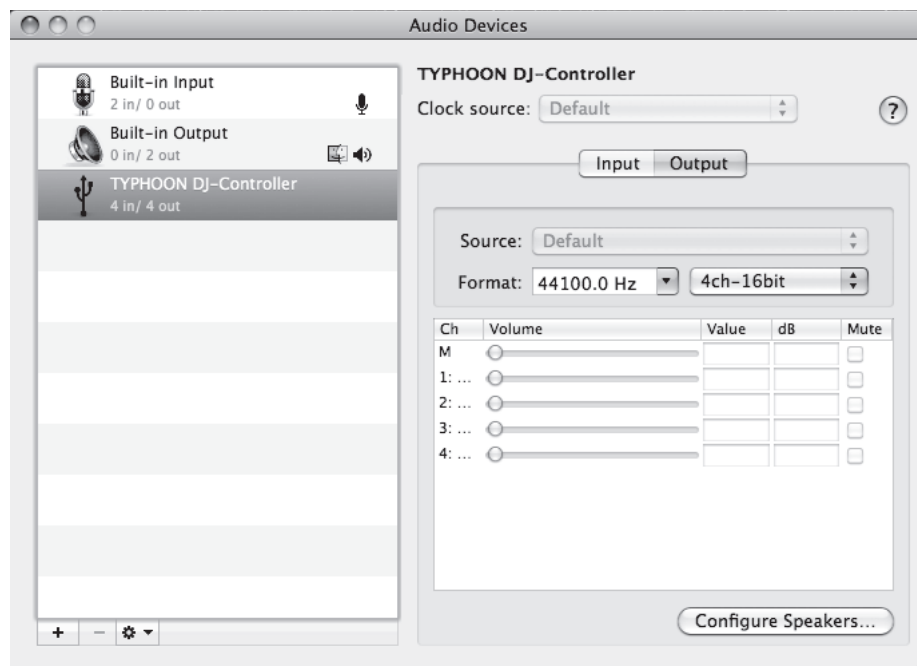


2. Set the power switch on the rear panel of Typhoon to USB.



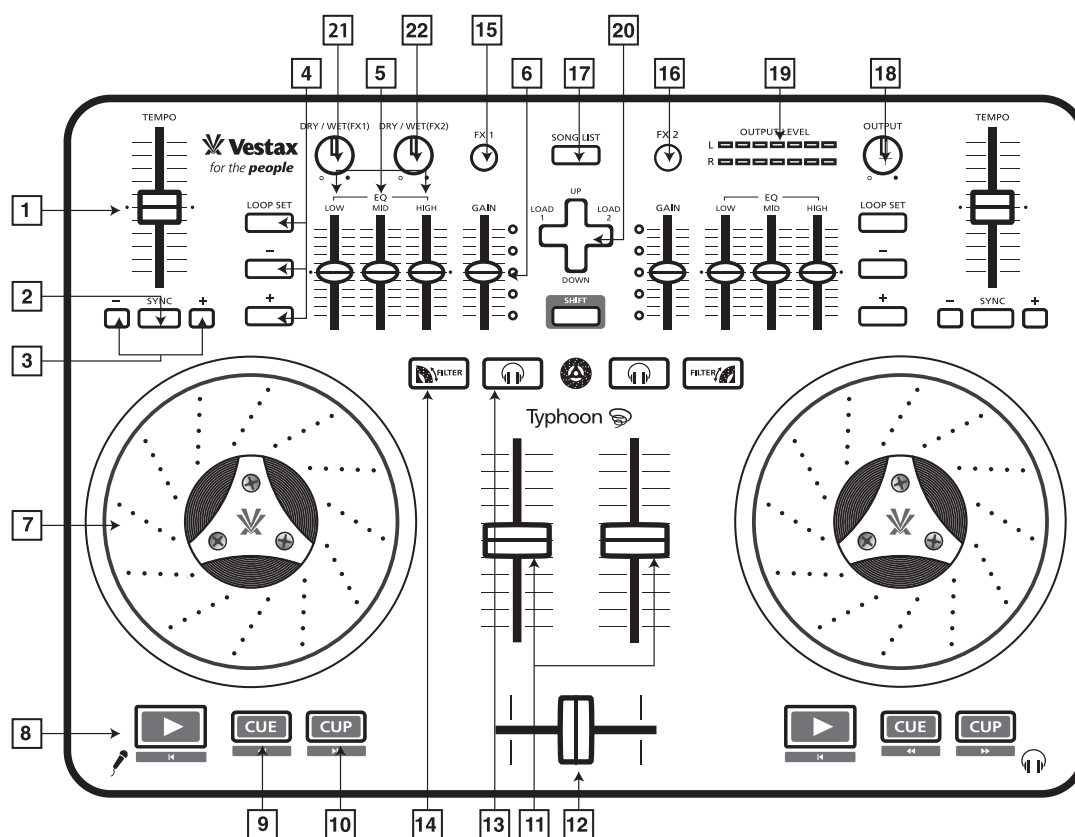
To check if your Mac has properly identified Typhoon, follow the following steps.

1. Go to Macintosh HD > Applications > Utilities. Open "Audio MIDI Setup"
2. Please confirm Typhoon is displayed.



*See the Quick start guide for Virtual DJ setup instructions.

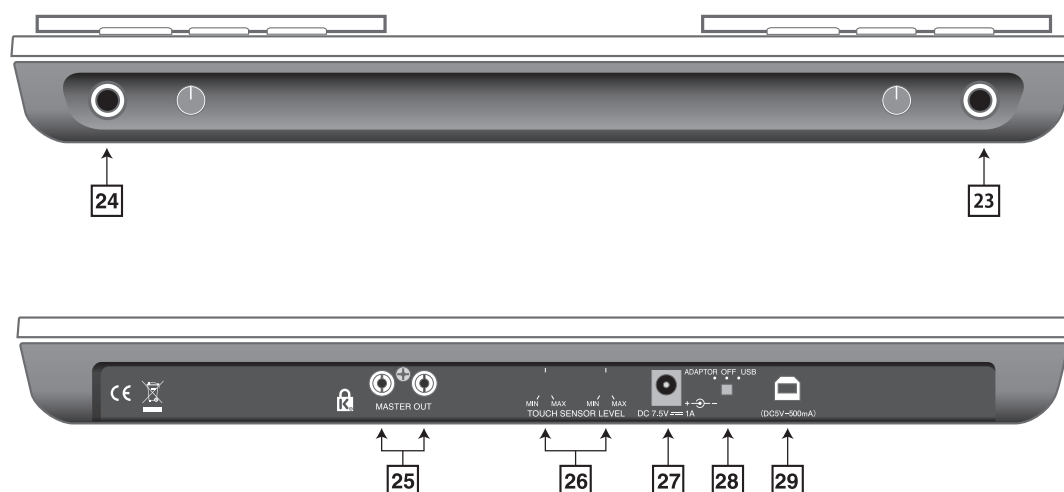
PART NAMES & FUNCTIONS



★ DJ Control Section

NO.	KEY	FUNCTION
1	TEMPO SLIDER	Speeds up & down the songs playing speed
2	SYNC	Synchronizes the BPM (beats per minute) of the song to the BPM of the song playing on the opposite deck.
3	PITCH BEND	Instantly speeds up & down the songs playback speed
4	LOOP SECTION	Push the LOOP SET button to set start points and end points for loops. The +/- buttons adjust the length of the loop and you can choose from AUTO and MANUAL. (See the Quick Start Guide for more info)
5	EQ section	The three knobs adjusts the HIGH, MID, and LOW frequency of each channel
6	GAIN	Adjusts the volume of the loaded song
7	JOG / PLATTER	Controls the loaded song just like a vinyl record found on turntables. You can control the pitch by touching the edge of the JOG.
8	Play	Plays and pauses the loaded song.
9	CUE	Sets a CUE point within the song when paused. Pushing the CUE button when a song is playing will jump the song to the CUE point and pause.
10	CUP	Push the CUP button while a song is playing to jump to the CUE point and play.
11	Volume Fader	Adjusts the output volume of each deck.
12	Cross Fader	Adjusts the output balance between the songs playing on deck 1 and 2.
13	Monitoring	Outputs the loaded song to your headphones. Songs can be monitored without raising the Volume Fader.
14	FILTER	A filter effect can be applied by spinning the JOG wheel while the button is switched ON. Spin anti-clockwise for a low pass filter. Spin clockwise for a high-pass filter.
15 / 16	FX1 / FX2	ON/OFF switch for effects.
17	SONG LIST	Switches the +/- key control between the data location tree and BROWSER tab. It will also bring you back to the BROWSER tab when over tabs are open.
18	OUTPUT	Adjusts the master output level
19	OUTPUT LEVEL	Indicates the master output level in colors
20	CURSOR	Selects songs by pushing up & down. Loads songs by pushing left & right.
21 / 22	DRY / WET	Adjusts the FX Volume.

※ Please see the included Quick Start Guide for more information about Virtual DJ.



★ Audio I/O

NO.	KEY	FUNCTION
23	HEADPHONE OUT	Connection for headphones Adjusts the volume of Headphone
24	MIC INPUT	Connection for microphones *Macintosh does not support
25	MASTER OUT	Connection for master output.

★ Others

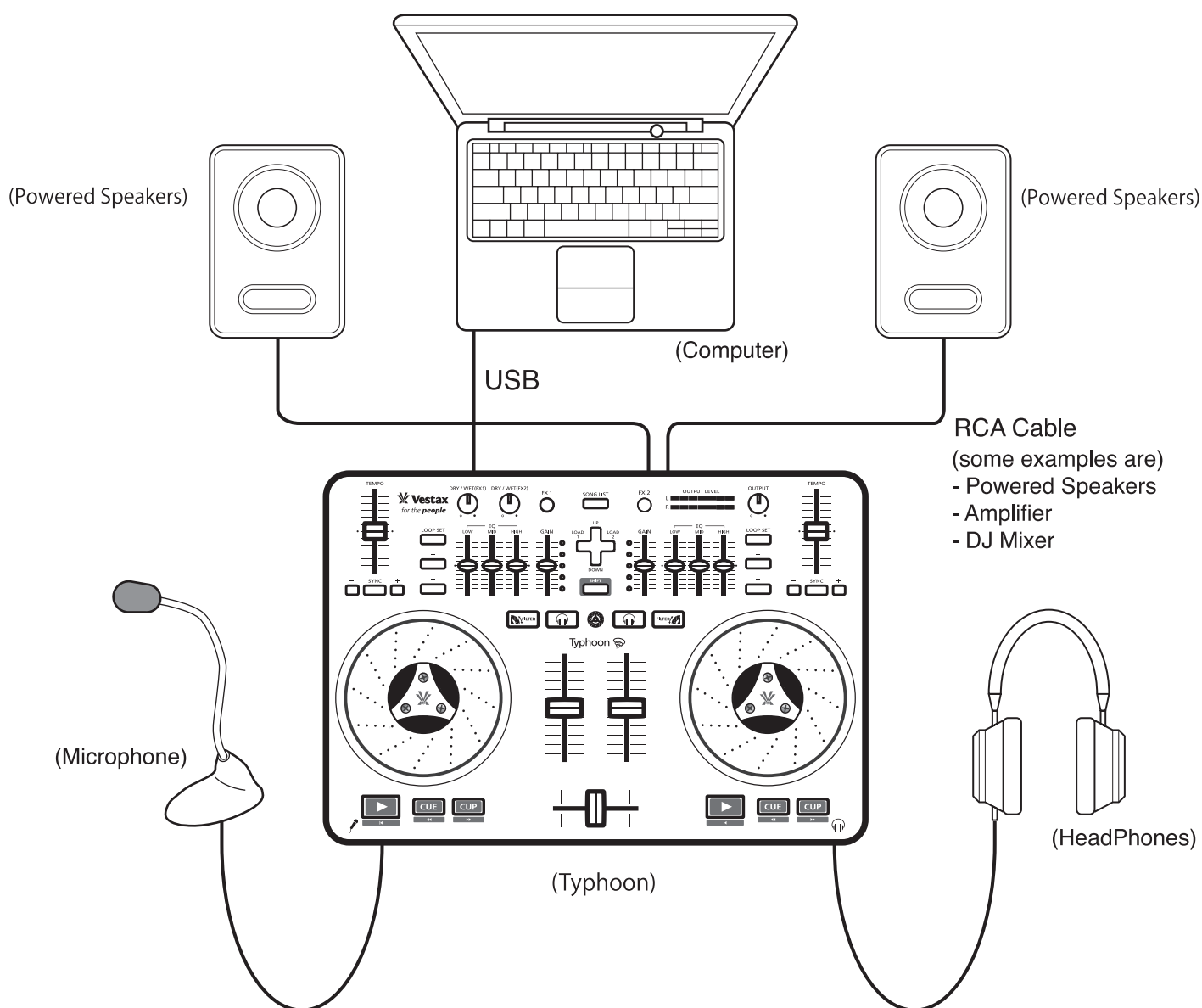
NO.	KEY	FUNCTION
26	TOUCH SENSOR LEVEL	Adjusts the sensitivity of the jog wheel
27	DC POWER INPUT	Connection for DC adaptor: DC7.5V 1A(Optional)
28	POWER SOURCE SELECTION	Selects the power source between the DC Adaptor, OFF, and USB
29	USB Socket	For connecting Typhoon to your computer.

★ SHIFT

Push SHIFT together with other buttons to enable the buttons double features.

- SHIFT + PLAY** : Jumps the song to the start and pauses
- SHIFT + CUE** : Rewind
- SHIFT + CUP** : Fast Forward

SETUP (Example)



*Items other than Typhoon illustrated in the images below are not included

*Macintosh does not support MIC Input

*See page 17 of the users manual

SUPPORT

TROUBLE SHOOTING

1) The computer doesn't recognize the Typhoon

- Please connect to another USB port.
- Check if the USB cable is connected correctly.

2) There's no sound coming from the Typhoon

- Check if the audio cable is connected correctly.
- Check whether the power supply of the amplifier (or Speaker) has been turned on.

OFFICIAL SUPPORT CHANNEL

For Typhoon hardware support and customer service,

Vestax Global Support

<https://www.vestax.jp/info/contact/ci/index.php>

SPECIFICATIONS

SIZE : 354mm(W) x 240mm(D) x 35mm(H) [45mm(H) with knobs]

Weight : 1.5kg

VOLTAGE : 5V(USB POWER)

POWER CONSUMPTION : 500mA

POWER ADAPTOR : DC7.5V 1A(Optional)



Typhoon

クイックスタートガイド (VDJ)

P.2~

Quick Start Guide

P.15~

TABLE OF CONTENTS

TABLE OF CONTENTS	15
COMPUTER SETUP	16
Virtual DJ LE INSTALL & SETUP	17
HOW TO PLAY Virtual DJ LE with Typhoon	21
BASIC OPERATION	21
OTHER FEATURES	25

SETUP

■ Windows

1. Connect Typhoon to your computer with the included USB cable.
2. Switch the power select switch located on the rear panel of the Typhoon to ADAPTOR if you are using the DC power adaptor, switch to USB if powering the Typhoon with USB bus power from your computer. The power LED on the Typhoon will light up when power is on.

NOTE: The Typhoon cannot operate at its best when connected to a non-powered USB hub and when the computers remaining battery is low. It is recommended to use the Vestax power adaptor or a powered USB hub for stable operation.

On Windows XP a message saying "New hardware found" will appear, drivers for "USB Composite Device" and "USB Audio Device" will be automatically installed. (The message may not appear when the Typhoon is connected for the second time or when the driver is already installed)

3. To check connection status in Windows XP, view [control panel] > [system] > [hardware] > [device manager] > inside USB controller find "USB Composite Device"(Property: Location: Typhoon)

■ Macintosh

1. Connect Typhoon to your computer with the included USB cable.
2. Switch the power select switch located on the rear panel of the Typhoon to ADAPTOR if you are using the DC power adaptor, switch to USB if powering the Typhoon with USB bus power from your computer. The power LED on the Typhoon will light up when power is on.

NOTE: The Typhoon cannot operate at its best when connected to a non-powered USB hub and when the computers remaining battery is low. It is recommended to use the Vestax power adaptor or a powered USB hub for stable operation.

3. To check the connection status in Macintosh, view [Applications] > [Utilities] > [Audio MIDI setup] and find the Typhoon listed on the left as shown in the picture.

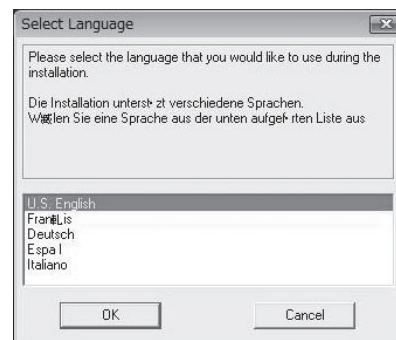
NOTE: Mac OS 10.5X users must open [MIDI Devices] in [MIDI setup]

Virtual DJ LE INSTALL & SETUP

Follow the steps below to install Virtual DJ LE Vestax edition.

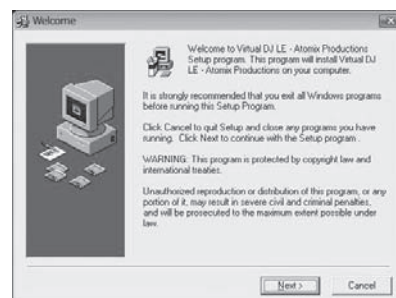
■ Windows

1. Insert the included installer disc to your computer.
2. Click 「Install_virtualdj_le_typhoon_v7.0.exe」 to start the installer.
3. Choose the language you wish to use during the installation and click [OK].

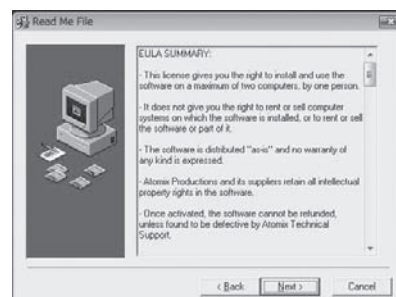


4. LOOP SECTION

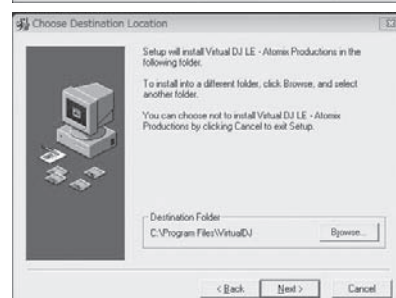
Push the LOOP SET button to set start points and end points for loops. The +/- buttons adjust the length of the loop and you can choose from AUTO and MANUAL. (See the Quick Start Guide for more info)



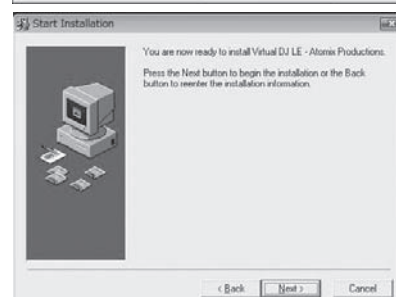
5. Click [Next].



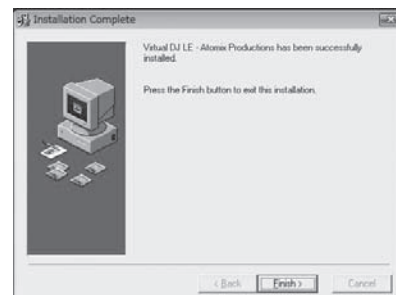
6. The installer will show where Virtual DJ LE will be installed. Click [Browse...] if you wish to change the destination. Click [Next].



7. Click [Next]



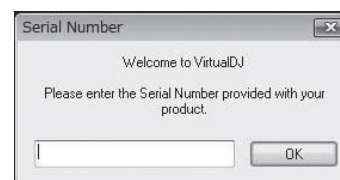
- Click [Finish]. Virtual DJ LE Vestax DJ LE Vestax edition has been successfully installed.



<Start Virtual DJ LE>

- Connect Typhoon to your computer with the included USB cable and turn the power on. Go to [Start] in Windows and click the Virtual DJ LE icon.

Virtual DJ LE will ask you to enter the software serial number. You can find the software serial number on the installer disc sleeve and also on the bottom side of Typhoon. Enter the software serial number and click [OK].

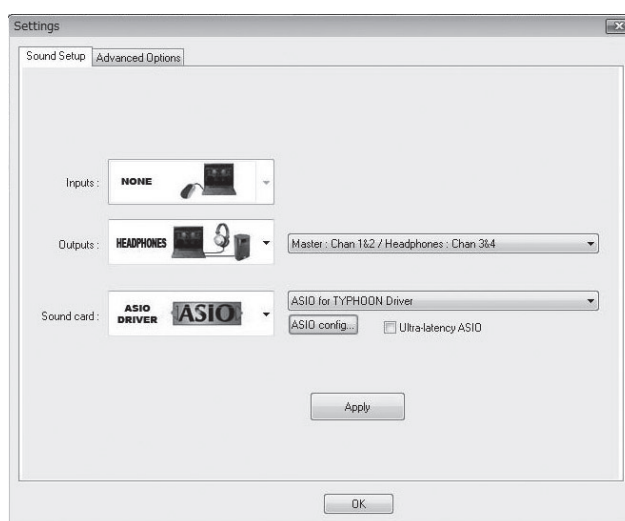


- Click [CONFIG] located on the top right of Virtual DJ LE. Change the settings for [Outputs] and [Sound Card] as below:

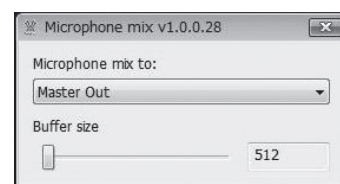
Sound Card: ASIO Driver (ASIO for TYPHOON Driver)

Outputs: Master: Chan 1&2/Headphones: Chan 3&4

Click [Apply]

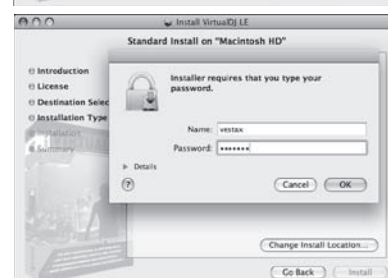
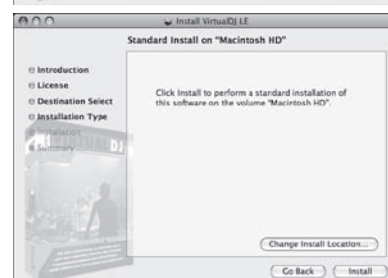
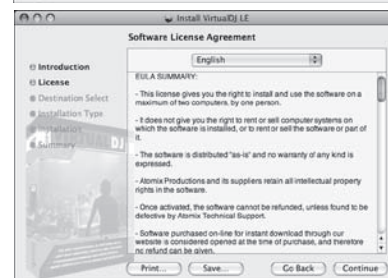
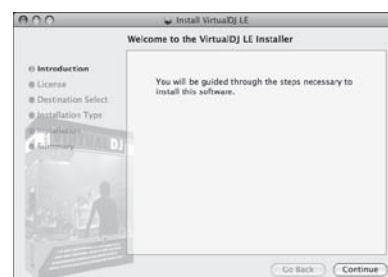
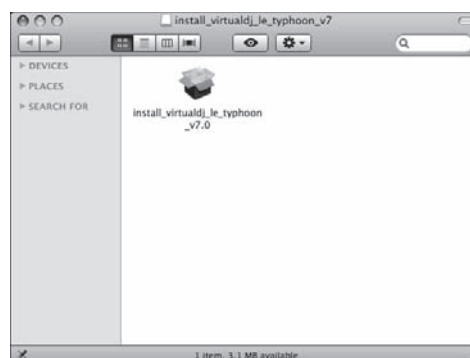


NOTE: Click [ASIO setting] to optimize the buffer size (this changes the latency). There will be less latency with minimum buffer size but the CPU usage will increase. Raise the buffer size if you need to reduce CPU usage.



Macintosh

1. Insert the included installer disc to your computer.
2. Open Finder and click 「Install_virtualdj_le_typhoon_v7.9.dmg」 to start the installer.
3. The installer will appear. Click [Continue].
4. Click [Continue]. The installer will ask to agree with terms of the software license agreement in order to continue the installation. Click [Agree].
5. Click [Continue]. The installer will ask to select a destination (disk) to save Virtual DJ LE. The default destination is [Macintosh HD]. If you wish to change the destination, click [Change install location] and choose.
6. Click [Install]. Macintosh will ask you to enter the name and password registered when setting up your Macintosh computer. Click [OK]. If you have forgotten your login name or password, please contact Apple Inc. Customer support.



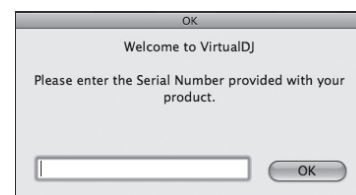
7. Click [Close]. Virtual DJ LE Vestax edition has been successfully installed.



<Start Virtual DJ LE>

1. Connect Typhoon to your computer with the included USB cable and turn the power on. Open Finder and go to [Applications], click the Virtual DJ LE icon.

Virtual DJ LE will ask you to enter the software serial number. You can find the software serial number on the installer disc sleeve and also on the bottom side of Typhoon. Enter the software serial number and click [OK].

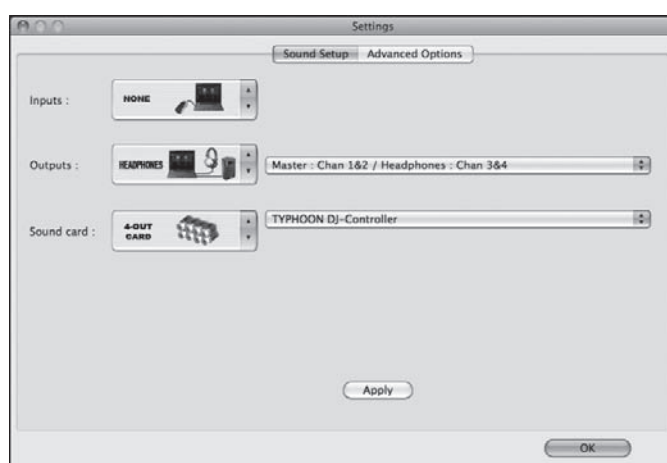


2. Click [CONFIG] located on the top right of Virtual DJ LE. Change the settings for [Outputs] and [Sound Card] as below:

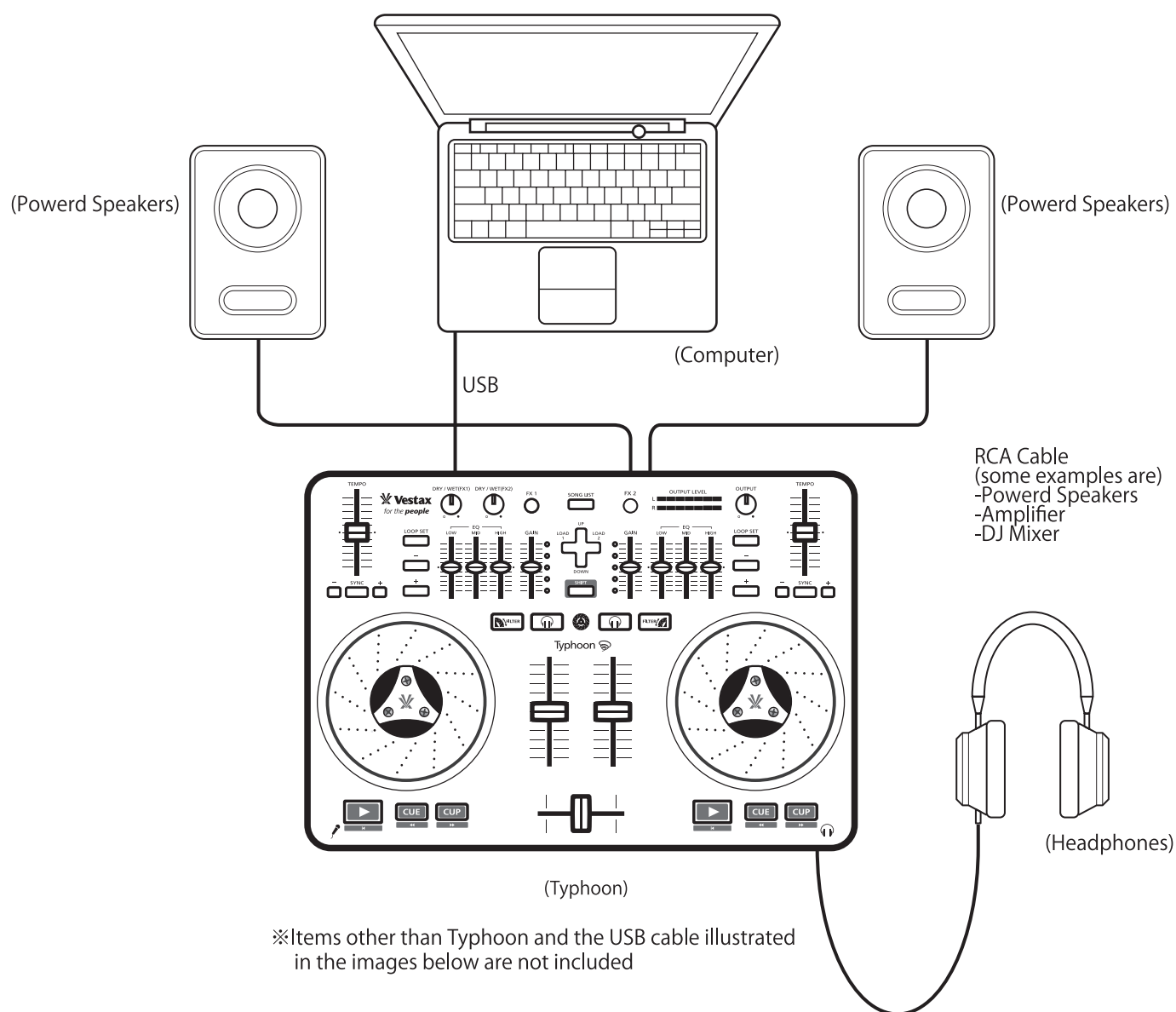
Sound Card: 4-OUT CARD : TYPHOON DJ-Controller

Outputs: Headphones : Master: Chan 1&2 / Headphones : Chan 3&4

Click [Apply]



HOW TO PLAY Virtual DJ LE with Typhoon



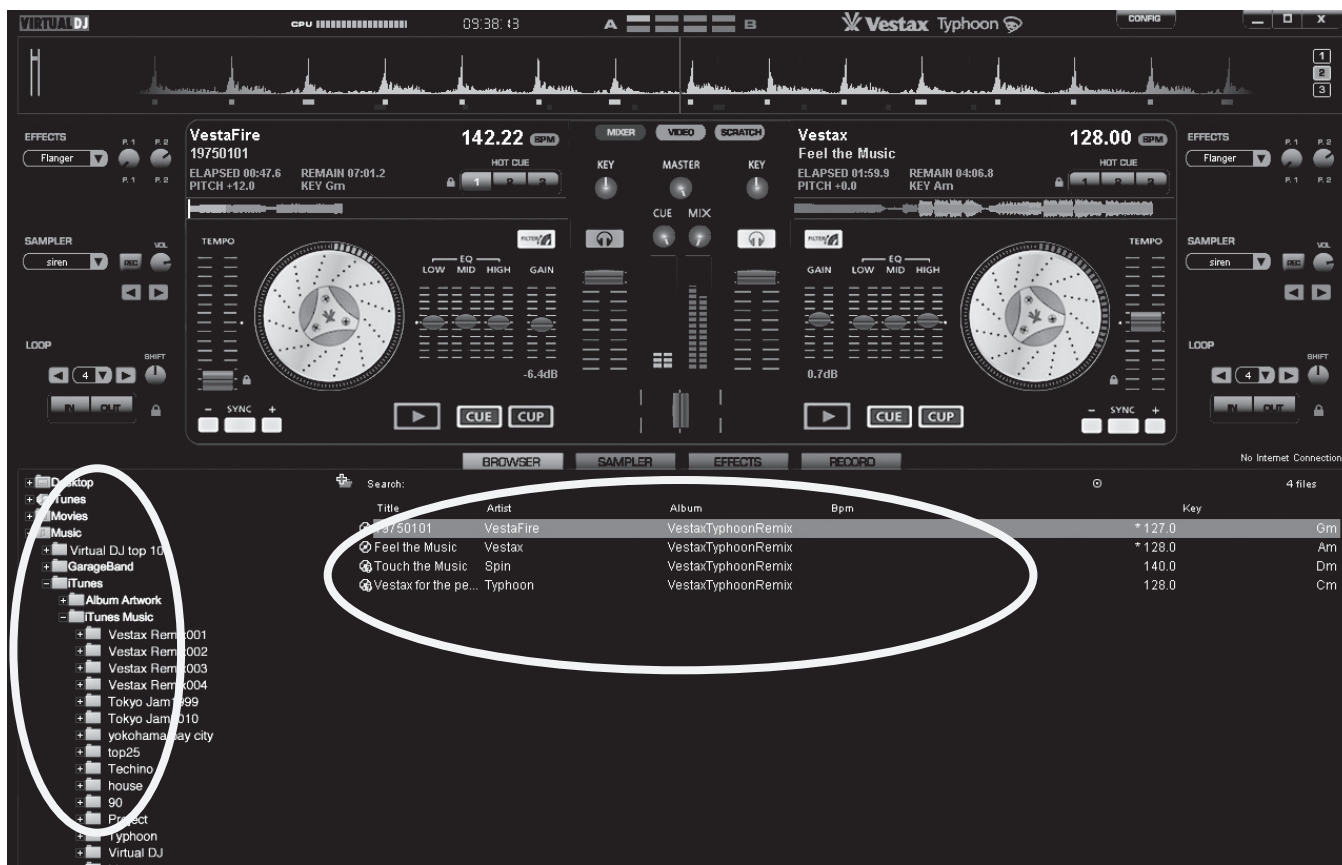
*See the Typhoon Owner's manual for hardware setup and control feature information.

BASIC OPERATION

Once setup has completed, let's play some songs.

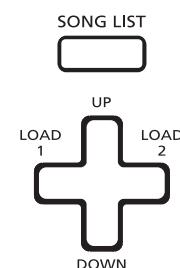
Virtual DJ LE will appear as the picture in page22. Move the volume faders (11) and cross fader (12) to see if Typhoon is correctly synched with Virtual DJ LE. If Typhoon is not synched, check the settings in the CONFIG menu.

Turn the OUTPUT knob on Typhoon to the left.
Let's load a song to the left deck.



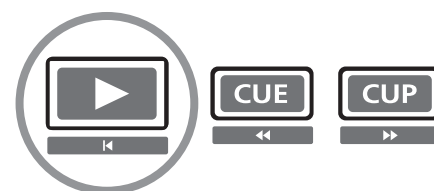
【Load a song】

Select a folder from the folder structure area (left bottom).
When you have selected a folder including songs, the content of the folder will appear in the search result area (right bottom). Push the SONG LIST button (17) to move control to the search result area. Push the up/down of +key (20) to go through your song list and push LOAD 1 of the +key to load a song to the left deck.
Once a song is loaded, the visual waveform of the song will appear in the control deck, and the Play(8) / CUE (9) buttons will blink.



【Play a song】

Push the blinking Play(8) button of the left deck to play the loaded song.
The song will pause when the Play(8) button is pushed again.
Check that the Crossfader(12) is set to the left side and raise the left Volume fader(11). Turn the OUTPUT knob slowly to the right until the sound output comes to a steady level. The sound is outputted from MASTER OUT (25).



★TIP

You can listen to songs without playing it out from the speakers by hooking up a pair of headphones to the Typhoon's HEADPHONE OUTPUT (25).
This comes handy when you want to pre listen to a song before mixing it in. Once headphones are plugged in, push the Monitoring(13) button on the deck you want to listen to. Adjust the sound volume for headphones with the knob on the left of the HEADPHONE OUTPUT (25).

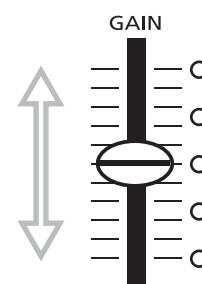


Adjust the input level

If the sound is too small, or too big, adjust the input level with the GAIN fader(6) to a point where the LED meter on the side reaches orange.

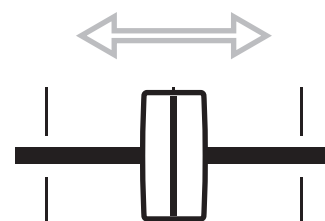
★TIP

The level shown in the LED meter will be a guide for when adjusting the sound volume of a song loaded to the opposite deck. Matching the sound volume of each deck is important when mixing 2 songs.



Mixing songs

The Crossfader (12), as it is named, crosses (mixes) the songs playing on deck 1 and 2. The sound of deck 1 is played when the Crossfader(12) is set to the left, and the sound of deck 2 is played when it is set to the right. Moving the Crossfader(12) rhythmically back and forth will add extra characters to scratch moves. Both songs are played out when the Crossfader(12) is set to the center, which will let you mix both songs using the input faders(11).



★TIP

Push the monitoring button(13) of the deck next to mix in to adjust the sound level and tempo so it matches the song currently playing. You can also monitor the mixed sound by adjusting the MIX knob (circled in the picture) in Virtual DJ LE.

Selecting the SRATCH panel will enable the vertical waveform display and CLONE DECK controls.



★TIP

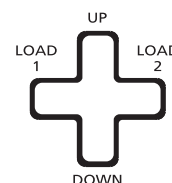
Each decks sound waveform is displayed vertically in the SCRATCH panel with in dividual colors. The vertical waveform gives you an easy view when setting CUE points to the song.

The CLONE deck control will load the same song loaded in one deck to the other. (For example if you push the left CLONE DECK button, the song in the right deck will be cloned to the left deck and play in sync)This enables you to juggle songs on the spot.

Click the MIXER button to go back to the MIXER panel.

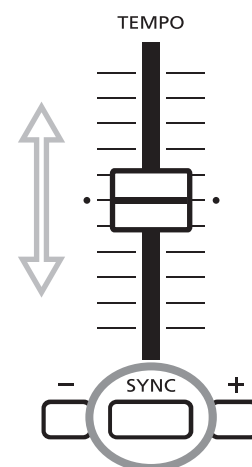


Now let's load a song to the right deck. Use the +key(20) to select and load a song. This time, push LOAD 2.



Once a song is loaded to the right deck, the visual waveform of the song will appear in the control deck, and the Play(8) / CUE (9) buttons will blink. There's now a song in each deck. Pushing the Play button(8) of either deck will start playing the song. Use the Crossfader(12) and the left/right Volume fader(11) to adjust the mixing level of the 2 songs.

At this point, the BPM of either song is not matched. The BPM, or tempo, can be matched with the TEMPO SLIDER(1) of each deck. If it's difficult to match the BPM using the TEMPO SLIDER(1), push the SYNC button(2) below the slider and the BPM of each deck will automatically match.



★TIP

You can listen to songs with your headphones with the VOLUME FADER(11) kept down, before playing them out by pushing the Monitoring button (13).

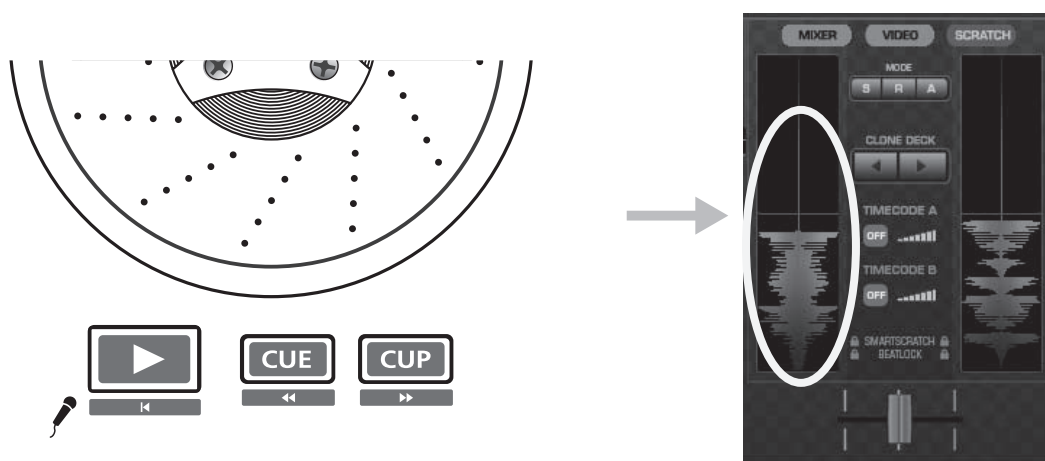
OTHER FEATURES

[CUE and CUP]

If there is a certain part of a song, where you would like to start playback from, you can set a CUE point.

① How to set a CUE point

Push the Play button(8) when the song has come nearby the point you wish to set. The song will pause and the CUE button(9) will blink. This shows the deck is in standby for CUE setting. Use the JOG wheel (touch the metal surface) to scroll the song to the exact point you wish to set a CUE point. Enabling the SCRATCH panel at this time will give you a better view of where you are setting the CUE point. Push the CUE button(9) where you would like to set the CUE point. The CUE button(9) will stop blinking and remain lit in red.



② Play a song from a CUE point

Push the CUP(10) button while the song is playing and the song will jump to the CUE point. If there is no CUE point, the CUP button will stay off while the song is playing. Push the CUP button when the song is paused to jump to the CUE point and standby.

★ TIP

The horizontal line in the vertical waveform is where the CUE point is set. Use this as a guide for quick CUE setting.

【LOOP】

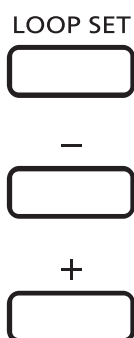
①How to set LOOP points (MANUAL LOOP)

Check to see the SMART LOCK button in the LOOP area of Virtual DJ LE is gray. Click the SMART LOCK button if it is orange and switch it to gray status.

The LOOP function is now set to MANUAL mode.

Push the LOOP SET(4) button at the point you wish to start a loop, when the song is playing.

The start point of the loop will be set and the LOOP SET(4) button will blink, showing it is in standby to set the out point. Push the LOOP SET(4) button again to set the out point, the audio between the 2 points will begin to loop continuously. The LOOP SET(4) button and +/- buttons will light up while a loop is being played.



The length of the loop can be changed with the +/- buttons while the loop is playing. If you push the [-] button, the loop will be shortened to half of the original length, with the same start point. Push the [-] button again and the loop will shorten in another half. Push the [+] button to double the length of the loop. The loop can be doubled up to 32 beats. The length of the loop is shown in the loop area, above the IN/OUT buttons.

Push the LOOP SET(4) button to stop the loop and go back to ordinary playback. (The LOOP SET(4) buttons LED will turn off)

②How to set LOOP points (AUTO LOOP)

Check to see the SMART LOCK button in the LOOP area of Virtual DJ LE is orange. Click the SMART LOCK button if it is gray and switch it to orange status.

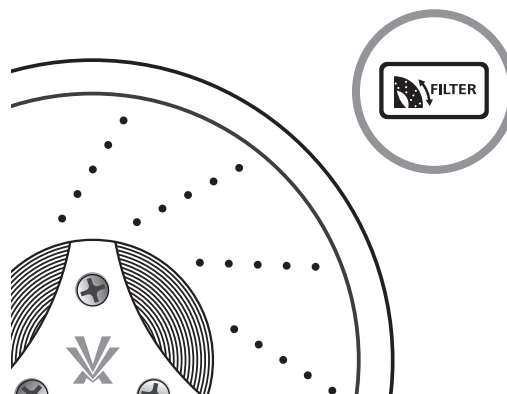
The LOOP function is now set to AUTO mode.

Push the LOOP SET(4) button at the point you wish to start a loop, when the song is playing. The start point will be set and the loop will automatically start. The LOOP SET(4) button and +/- buttons will light up.

The +/- buttons function the same as in MANUAL mode. The length of the loop is shown in the loop area, above the IN/OUT buttons. Push the LOOP SET(4) button to stop the loop and go back to ordinary playback. (The LOOP SET(4) buttons LED will turn off)

【FILTER】

You can apply a filter effect by rotating the JOG/PLATTER(7) when the FILTER button(14) is turned ON.
A low pass filter effect will be applied when rotated anti-clockwise and a high pass filter effect will be applied when rotated clockwise.
Push the FILTER button(14) to turn the filter effect OFF.



★TIP

Ordinary JOG function will be turned off when the FILTER button(14) is turned on.

【EFFECTS】

Digital effects can be added to the song by pressing the FX1/FX2(15/16) buttons.
FX1 will apply to deck1, FX2 will apply to deck 2.
The buttons will light up when turned on. (Some effects automatically turn off)
The balance between the original sound (DRY) and effect added sound (WET) can be adjusted with the DRY/WET knob(21/22) on each deck.



★TIP

Click on the effects selection drop-down arrow in the EFFECTS area to select which effect to apply.



