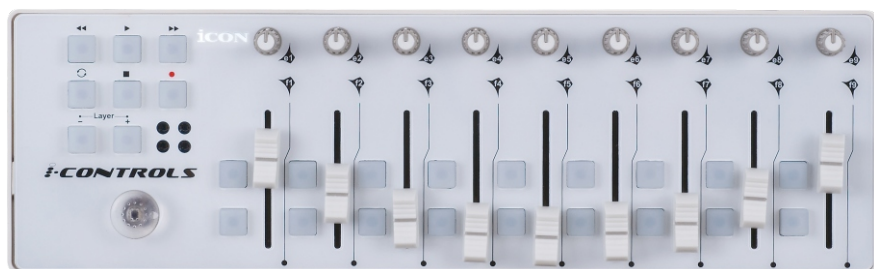


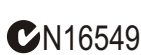
iCON





i-CONTROLS

**Multi-Controls with Joystick
USB MIDI controller**



Owner's Manual



 <p>CAUTION</p> <p>RISK OF ELECTRIC SHOCK DO NOT OPEN RISQUE DE CHOC ELECTRIQUE NE PAS OUVRIR</p> <p>CAUTION: TO REDUCE THE RISK OF ELECTRIC SHOCK DO NOT REMOVE COVER (OR BACK) NO USER-SERVICEABLE PARTS INSIDE REFER SERVICING TO QUALIFIED PERSONNEL</p> <p>ATTENTION: POUR EVITER LES RISQUES DE CHOC ELECTRIQUE: NE PAS ENLEVER LE COUVERCLE. AUCUN ENTRETIEN DE PIECES INTERIEURES PAR L'USAGER. CONFIER L'ENTRETIEN AU PERSONNEL QUALIFIE.</p> <p>AVIS: POUR EVITER LES RISQUES D'INCENDIE OU D'ELECTROCUTION, N'EXPOSEZ PAS CET ARTICLE A LA PLUIE OU A L'HUMIDITE</p>		 	<p>The lightning flash with arrowhead symbol within an equilateral triangle is intended to alert the user to the presence of uninsulated dangerous voltage within the product's enclosure, that may be of sufficient magnitude to electric shock to persons. Le symbole clair avec point de flèche à l'intérieur d'un triangle équilatéral est utilisé pour alerter l'utilisateur de la présence à l'intérieur du coffret de voltage dangereux non isolé d'ampleur suffisante.</p> <p>The exclamation point within an equilateral triangle is intended to alert the user of the presence of important operating and maintenance (servicing) instructions in the literature accompanying the appliance. Le point d'exclamation à l'intérieur d'un triangle équilatéral est employé pour alerter les utilisateurs de la présence d'instructions importantes pour le fonctionnement et l'entretien (service) dans le livret d'instruction accompagnant l'appareil.</p>
---	---	--	---

Important Safety Instructions

1. Read these instructions.
2. Keep these instructions.
3. Heed all warnings.
4. Follow all instructions.
5. Do not use this apparatus near water.
6. Clean only with dry cloth.
7. Do not block any ventilation openings. Install in accordance with the manufacture's instructions.
8. Do not install near any heat sources such as radiators, heat registers, stoves, or other apparatus (including amplifiers) that produce heat.
9. Only use attachments/accessories specified by the manufacturer.

Contents

Introduction	
What's in the package	1
Features	2
Front Panel Layout	3
Side Panel Layout	3
Getting Started	
Connecting your iControls system	4
Controller Features and Settings	4
Faders	4
Control Buttons	4
Knobs	5
Joystick	5
MIDI Machine Control (MMC) buttons	5
Installing iMap™ Software for Mac OSX	6-7
Installing iMap™ Software for Windows	8-9
Assigning MIDI functions with iMap™	10
iMap™ iControls software panel	10-12
Restore the factory default settings	12
Daisy Chain with iControls or any i-series controllers	13
Specifications	14
Appendix A	
General MIDI Controller Numbers (MIDI CC'S)	15
Services	16

Introduction

Thank you for purchasing the ICON iControls USB MIDI controller. We sincerely trust this product will provide years of satisfactory service, but if anything is not to your complete satisfaction, we will endeavor to make things right.

In these pages, you'll find a detailed description of the features of the iControls, as well as a guided tour through its front and side panels, step-by-step instructions for its setup and use, and full specifications.

You'll also find a warranty card enclosed. Please don't forget to fill it out and mail it so that you can receive online technical support at: www.icon-global.com. And so we can send you updated information about these and other ICON products in the future. As with most electronic devices, we strongly recommend you retain the original packaging. In the unlikely event the product must be returned for servicing, the original packaging (or reasonable equivalent) is required.

With proper care and adequate air circulation, your iControls will operate without any trouble for many years. We recommend that you record your serial number in the space provided below for future reference.

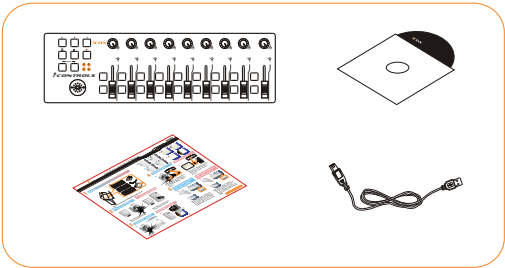
Please write your serial number here for future reference:

Purchased at:

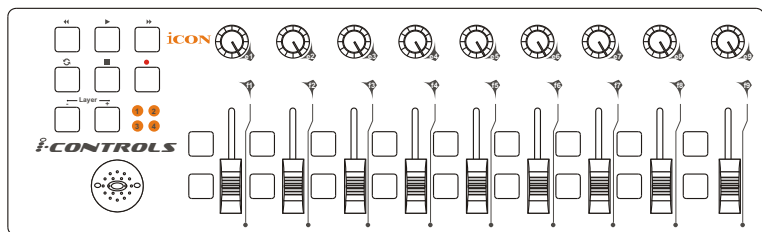
Date of purchase:

What's in the package?

- iControls USB MIDI controller x 1
- Software CD x 1
- Quick Start Guide
- USB2.0 Cable



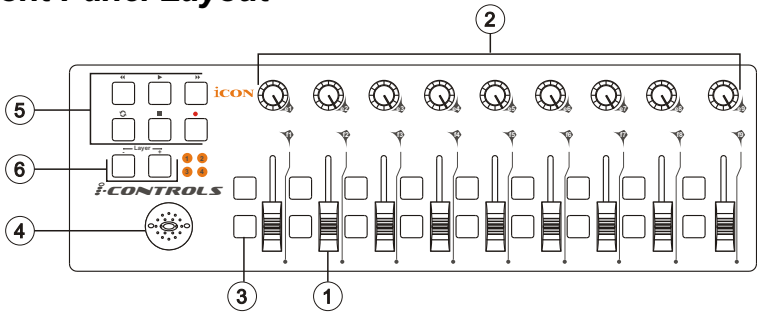
Features



Main features include:

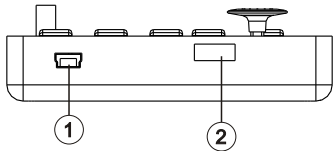
- Extremely compact and designed to match the MacBook™
- 9 assignable faders 18 assignable buttons
- 9 assignable rotary knobs for setting MIDI CC
- Joystick for control
- "Layer" buttons for customizing 4 scenes for instant control of multiple applications
- 6 transport buttons
- 2xUSB Connectors for daisy chain with any i-series controllers
- Class-compliant with Windows XP, Vista (32 bit), and Mac OS X
- USB bus-powered
- iMap™ software included for easy mapping of MIDI functions.
- An aluminum cover, in different graphic designs and colors, is available as an option.

Front Panel Layout



- ① **Faders**
These nine programmable faders slide up and down to adjust linear MIDI parameters such as volume.
- ② **Knobs**
These nine programmable knobs allow to adjust linear MIDI parameters such as Pan.
- ③ **Control Buttons**
These eighteen programmable buttons, set in nine groups of two, allow you to activate or control the features of your DAW or the music software that you are using.
- ④ **Joystick**
This joystick works as a mouse pad on your notebook computer.
- ⑤ **Transport Buttons (MMC)**
iControls has dedicated MIDI Machine Control (MMC) buttons on the front panel.
- ⑥ **Layer Buttons**
These two buttons allow you to switch between the four layers. Each layer can be set to different parameters for the faders and other knobs .

Side Panel Layout



- ① **USB port (B-Type)**
Functions as a MIDI port to your notebook (or computer) and compatible software. Also provides power to your iControls.
- ② **USB port**
Use to daisy chain with the second unit of iControls or any i-series controllers such as iKey or iPad.

Getting Started

Connecting your iControls controller system

- 1 **Connect the iControls to your Mac/PC via the USB port.**

Choose a USB port on your Mac/PC and insert the wide (flat) end of the USB cable. Connect the cable's small jack end to the iControls. Your Mac/PC should automatically "see" the new hardware and notify you that it is ready to use.

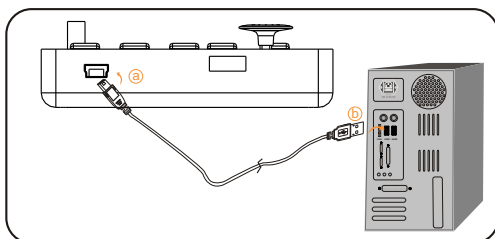


Diagram 1



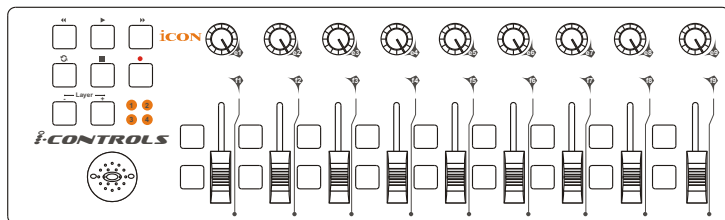
Diagram 2

- 2 **Assign the MIDI messages to iControls**

Refer to page 10 for "Assign the MIDI functions with "iMap™" software"

Controller Features and Settings

Learning how to effectively and creatively use the functions on your iControls is simple.



Faders

There are nine faders on iControls. Fader 9 is the generally-accepted control for volume. You can assign any one of 119 different MIDI CC numbers to any fader, although we recommend keeping Fader 9 set to volume (CC07), for volume control. CC numbers 120 to 127 are non-linear parameters, and cannot be controlled by a linear fader.

Control Buttons

There are eighteen control buttons. You can assign different CC numbers as well as MIDI channel to any button.

Knobs

There are nine knobs on iControls. Any linear CC number can be assigned to any knob, as well as any individual channels 1-16.

Michael says, "Think about how fine or smooth a control technique you will need to use, and then decide whether to use a knob or a fader for that function. Your fader chops may be smoother, or a knob, with its slow rotary action, might be more suitable."

Joystick

You may use this joystick as your computer mouse to control the computer pointer.

MIDI Machine Control (MMC) buttons

MIDI Machine Control (MMC) messages are used by some devices and software to simulate the controls that any analog tape recorder would have, such as Stop, Play, and Record. Not all software/hardware will respond to MMC messages, so look for the section on this topic in the manual for whatever software or hardware device you are using with iControls. It will tell you what functions can be operated with the MMC buttons on iControls.

The MMC message is a SysEx message. The device ID for iControls is 127, the standard MIDI default. Your software/hardware can be configured to accept this device ID, if it does not already recognize the default 127 value. The CC numbers for these controls are

- << - rewind = 05
- >> - fast forward = 04
- - stop = 01
- > - play = 02
- - record = 06

Installing iMap™ Software for MAC OSX

Please follow the procedures below step-by-step to install your iMap™ software to Mac OS X

① Turn on your MAC.

② Insert the Utility CD in your CD-Rom

After you have inserted the CD into your CD-Rom, an installation CD icon should appear in desktop; click the icon to start the install wizard



Diagram 1

③ Setup Wizard appear

Setup wizard appears, please click "Continue"

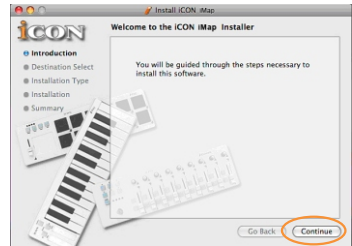


Diagram 2

④ Choose Install Location

Select a destination to install iMap™ software to Mac OS X, then click "Continue"



Diagram 3

⑤ Change Install Location

If you want to change install location, please click "Change Install Location" button and select another location or just click "Install" button to continue.

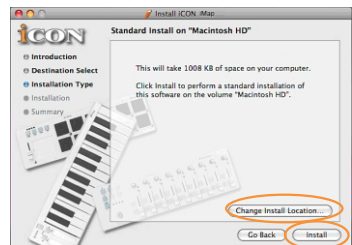


Diagram 4

Installing iMap™ Software for MAC OSX(continues)

⑥ Input Administrator information

To install iMap™ software, you need to input administrator user information, please input the name and password of administrator then click "Install" to continue.

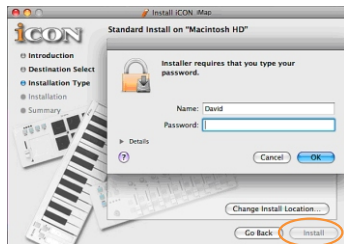


Diagram 5

⑦ Installation finished

Click "Close" to complete the iMap™ software installation.

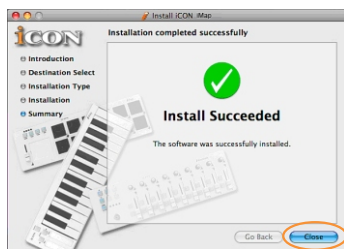


Diagram 6

Installing iMap™ Software for Windows

Please follow the procedures below step-by-step to install your iMap™ software.

① **Turn on your PC.**

② **Insert the Utility CD in your CD-Rom**

After you have inserted the CD into your CD-Rom, an installation screen should appear as shown in diagram 1; click "iMap™ installation".

(Note: If the installation screen not appear automatically go to the CD folder and double click on "Setup")



Diagram 1

③ **Setup Wizard appear**

Setup wizard appears, please click "Next"

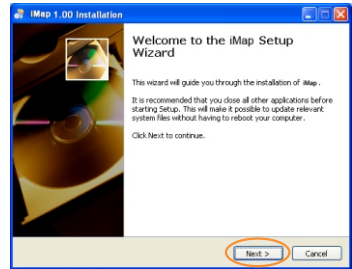


Diagram 2

④ **Choose Install Location**

Choose your preferred install location for iMap™ or use the default location and click "Next"



Diagram 3

⑤ **Select shortcut**

Select the start menu folder in which you would like to create the iMap™ shortcut. Then click "Next"

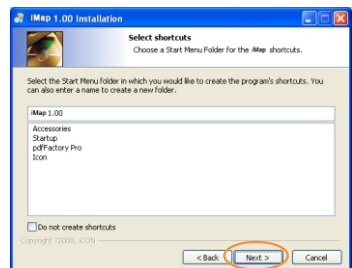


Diagram 4

Installing iMap™ Mapping Software for Windows(continues)

⑥ Create a shortcut on your desktop

Please untick the box if you do not want to place a shortcut icon on your desktop for iMap™, otherwise click "Next"



Diagram 5

⑦ iMap™ started to install

The iMap™ installation has now started, wait for it to finish. Then click "Finish"

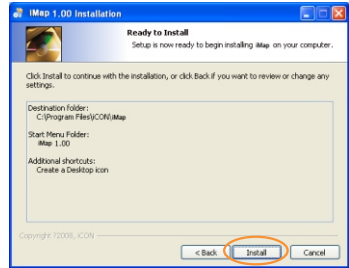


Diagram 6

⑧ Installation finished

Click "Finish" to complete the iMap™ software installation.



Diagram 7

Assigning MIDI functions with iMap™

You can use iMap™ to assign the MIDI functions of your iControls easily. Please launch the iMap™ software, a device selector screen will appear as shown in diagram 1. Then click the "iControls" button.



Diagram 1

Note: If your iControls is not connected to your Mac/PC, a message of "There are no MIDI input devices" will appear. Please connect iControls to your Mac/PC with the provided USB cable.

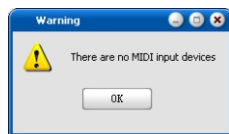
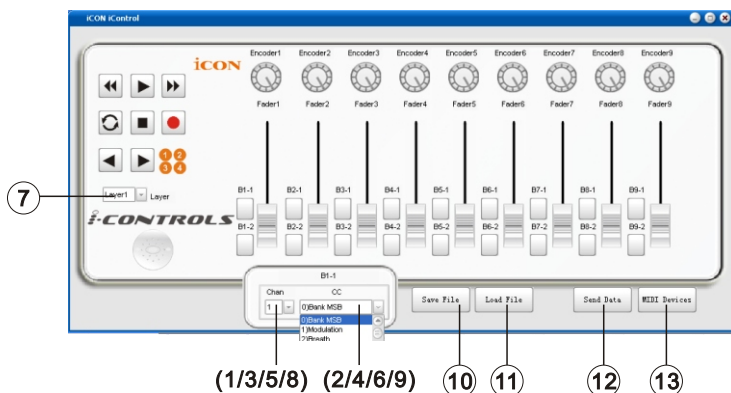


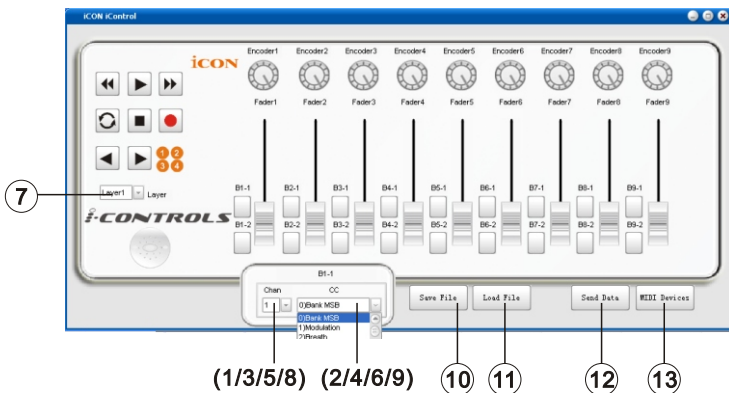
Diagram 2

iMap™ iControls software panel



- 1 Assign the MIDI channels to the fader**
Select your desired MIDI channel from 1-16 for the fader
- 2 Assign the CC number to the fader**
Select your desired CC number from 0-127 in the pull-down menu for the fader.
- 3 Assign the MIDI channels to the control buttons**
Select your desired MIDI channel from 1-16 for the control button
- 4 Assign the CC number to the control button**
Select your desired CC number from 0-127 in the pull-down menu for the control button.

iMap™ iControls software panel(continues)



5 Assign the MIDI channels to the knob

Select your desired MIDI channel from 1-16 for the knob

6 Assign the CC number to the knob

Select your desired CC number from 0-127 in the pull-down menu for the knob.

7 Select the 4 different Layers and choose the desired settings for each layer

You may have 4 different "Layers" for different applications. Each "Layer" can have its own control settings.

8 Assign the MIDI channels to the MMC buttons

Select your desired MIDI channel from 1-16 for the MMC buttons

9 Assign the CC number to the MMC buttons

Depending on your DAW or music software, assign a CC number to these buttons according to your software.

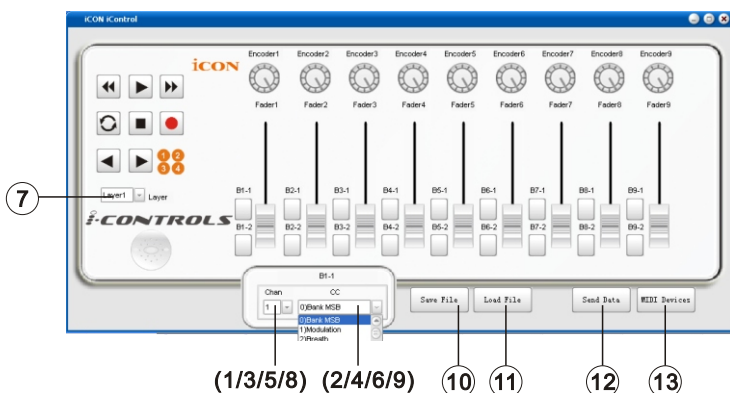
(Note: We have created a series of templates for different software. These are contained on the Utility CD. Simply import the correspondence template file into your DAW and these buttons will function as MMC right away.)

10 "Save file" button

Click this button to save your current settings for the iControls. The file is an ".icon" file.

11 "Load file" button

Click this button to load a previously saved ".icon" setting file for your iControls.


CONTROLS

⑫ "Send Data" button

Click this button to upload the iMap™ software settings to your iKey via USB connection.

(Note: You must have connected your iControls to your Mac/PC, otherwise the settings upload will not be successful.)

⑬ "MIDI Devices" button

Click this button, a MIDI device select window will appear as shown in diagram 1. Please select "ICON iControls" for the MIDI Out Devices.



Diagram 1

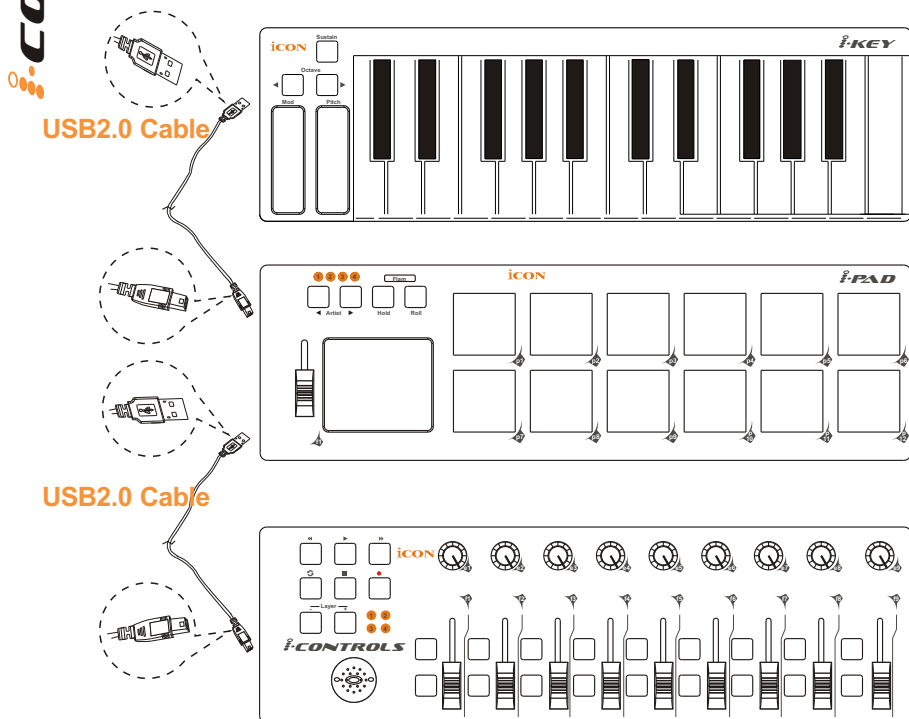
Restore the factory default settings

By holding down the buttons "Rewind ◀◀", "Play ▶" and "FastForward ▶▶" together, the settings of the iControls will return to its factory default condition.

Daisy Chain with iControls or any i-series controllers

You may daisy chain up to 3 units of iControls or any i-series controllers.

- ① **Connect the first unit of iControls to your Mac/PC via the USB port.**
Choose a USB port on your Mac/PC and insert the wide (flat) end of the USB cable and the other small end (B-type USB pack) to iControls.
- ② **Connect the next units of iControls (or iKey/iPad)**
Insert the wide (flat) end of the USB cable to the first unit of iControls's second USB port and the other small end (B-type USB jack) to the second unit iControls's USB port. By following the same procedure, you may daisy chain with the 3rd unit of iControls (or iKey/iPad).



Specifications

Connector:	To computer	USB connector (mini B type)
	To i-series controller	USB connector (standard type)
Power supply:	USB bus power	
Current consumption:	100mA or less	
Weight:	0.51kg (1.1lb)	
Dimensions:	325(L) X 99(W) X 20(H)	
	12.78"(L) x 3.78"(W) x 0.75"(H)	

Appendix A

General MIDI Controller Numbers (MIDI CC'S)

00	Bank Select	46	Controller 46	92	Tremelo Depth
01	Modulation	47	Controller 47	93	Chorus Depth
02	Breath Control	48	Gen Purpose 1 LSB	94	Celeste (De-tune)
03	Controller 3	49	Gen Purpose 2 LSB	95	Phaser Depth
04	Foot Control	50	Gen Purpose 3 LSB	96	Data Increment
05	PortaTime	51	Gen Purpose 4 LSB	97	Data Decrement
06	Data Entry	52	Controller 52	98	Non-Reg Param LSB
07	ChannelVolume	53	Controller 53	99	Non-Reg Param MSB
08	Balance	54	Controller 54	100	Reg Param LSB
09	Controller 9	55	Controller 55	101	Reg Param MSB
10	Pan	56	Controller 56	102	Controller 102
11	Expression	57	Controller 57	103	Controller 103
12	Effects Controller 1	58	Controller 58	104	Controller 104
13	Effects Controller 2	59	Controller 59	105	Controller 105
14	Controller 14	60	Controller 60	106	Controller 106
15	Controller 15	61	Controller 61	107	Controller 107
16	Gen Purpose 1	62	Controller 62	108	Controller 108
17	Gen Purpose 2	63	Controller 63	109	Controller 109
18	Gen Purpose 3	64	Sustain Pedal	110	Controller 110
19	Gen Purpose 4	65	Portamento	111	Controller 111
20	Controller 20	66	Sostenuto	112	Controller 112
21	Controller 21	67	Soft Pedal	113	Controller 113
25	Controller 25	68	Legato Pedal	114	Controller 114
26	Controller 26	69	Hold 2	115	Controller 115
27	Controller 27	70	SoundVariation	116	Controller 116
28	Controller 28	74	Cut-off Frequency	117	Controller 117
29	Controller 29	75	Controller 75	118	Controller 118
30	Controller 30	76	Controller 76	119	Controller 119
31	Controller 31	77	Controller 77	Channel Mode Messages	
32	Bank Select LSB	78	Controller 78	120	All Sound Off
33	Modulation LSB	79	Controller 79	121	Reset all Controllers
34	Breath Control LSB	80	Gen Purpose 5	122	Local Control
35	Controller 35	81	Gen Purpose 6	123	All Notes Off
36	Foot Control LSB	82	Gen Purpose 7	124	Omni Off
37	PortaTime LSB	83	Gen Purpose 8	125	Omni On
38	Data Entry LSB	84	Portamento Control	126	Mono On (Poly Off)
39	ChannelVolume LSB	85	Controller 85	127	Poly On (Mono Off)
40	Balance LSB	86	Controller 86	Additional Messages	
41	Controller 41	87	Controller 87	128	Pitch Bend Sensitivity
42	Pan LSB	88	Controller 88	129	Fine Tune
43	Expression LSB	89	Controller 89	130	Coarse Tune
44	Controller 44	90	Controller 90	131	Channel Aftertouch
45	Controller 45	91	Reverb Depth		

Services

If your iControls needs servicing, follow these instructions.

1. Ensure the problem is not related to operation error or external system devices.
2. Keep this owner's manual. We don't need it to repair the unit.
3. Pack the unit in its original packaging including end card and box. This is very important. If you have lost the packaging, please make sure you have packed the unit properly. ICON is not responsible for any damage that occurs due to non-factory packing.
4. Ship to the ICON tech support center or the local return authorization.

U.S. OFFICE:

ICON Digital Corporation.
2222 Pleasant View Road,
Suite #1 Middleton,
WI 53562

Tel: 608-829-3450 Fax: 608-829-1972
infous@icon-global.com

ASIA OFFICE:

ICON International Digital Limited
Suite Nos. 7-10,
8th Floor, Sunley Centre,
No.9 Wing Yin Street,
Kwai Chun. N.T.

Hong Kong
Tel: 852-2398-2286 Fax: 852-2789-3947
infoasia@icon-global.com

For additional update information please visit our website at:
www.icon-global.com



iCON[®]
www.icon-global.com
info@icon-global.com

